

START PACKAGING™



— biodegradable, recyclable and eco-friendly packaging —



We're passionate about promoting sustainability through the use of compostables. We believe that composting is the environmentalism of the future, and work hard to spread the knowledge that there are alternatives to disposable plastic. Founder Ken Jacobus started Good Start Packaging in 2009 because he wanted his children to know that he valued the earth—and had the courage to act on those values—to create a healthier place for them to live. Reducing disposable plastic use is our key mission, in addition to helping our clients be more successful. We are deeply grateful to our clients and to everyone who takes steps to help the environment.

WHY CHOOSE GOOD START

- We may sell a commodity but we don't treat you like one. We don't have customers, we have clients—we love helping you find the most sustainable and reliable packaging for your products. Doing the right thing is only way we like to win.
- We actually believe in the products we sell. We won't sell anything that isn't consistent with our sustainability mission.

IT ALL MAKES A DIFFERENCE

- **Every cup counts:** Using sustainable products sometimes costs more. But the more people who step up and do the right thing, the more companies compete to develop products that are both environmentally and financially sustainable. Everyone wins.
- **Kids are watching:** With our every action, we're modeling the values the next generation will have.
- **Your customers do care about the earth:** Help them feel good about the choices they're making by being a responsible steward of the environment in everything you do.



OUR VALUES

- We have high standards for our employees—we expect them to treat all our suppliers, teammates, and clients the way they'd want to be treated.
- We empower our team to take initiative to speak up when things are broken.
- We practice empathy for others because we assume everyone has good intentions.
- We believe the process of improving never ends.
- We're in the business of helping our clients succeed, whether we sell them packaging or give them ideas to improve their business. A sales transaction is never a prerequisite to helping others.
- What's the point of doing all this work if we don't chill out and have fun once in awhile? We laugh a lot, mostly at each other.



START PACKAGING™ Client Service 866-226-0584 M-F, 9a-5p ET

info@goodstartpackaging.com

CELEBRATING GREAT FOOD WITH SUSTAINABLE PACKAGING



CUPS

hot / cold / parfait

2



BOWLS with lids

fiber / paper

12



CLAMSHELLS

fiber / clear

18



TRAYS / BOXES W/ LIDS

23



CONTAINERS W/ LIDS

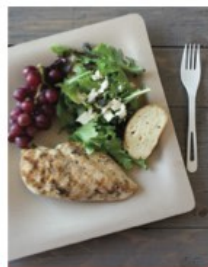
27



BOXES

fiber / paper

30



PLATES

square / round / oval

32



SERVICE WARE

napkins / utensils

35



JUICE BOTTLES & CAPS

38



BAGS

40

Featured Supplier: World Centric	9
Summary of Policies, Shipping	52
Client Showcase	56



Check out our internet media page GoodStart.tv to see inspiring, informational videos about our clients, our products and reducing waste.

BAKERY SUPPLIES

44

CATERING SUPPLIES

48

FACILITY SUPPLIES

50

CUSTOM PRINTING

54



goodstartpackaging.com



Custom-printed Cups and Sleeves, Essex Chocolatier and Coffee Bar, Essex, CT



Custom-printed Insulated Cups, Fosko Coffee Barre, Pensacola, FL

CUPS
HOT

COMPOSTABLE HOT BEVERAGE CUPS

We've done the comparison shopping for you! Presenting an assortment of the highest quality compostable coffee cups we've tested and tried. Feel free to request samples so you can check out the quality first-hand. We're sure you'll be happy with the performance of these cups!



did you know...

Traditional paper coffee cups are lined with a plastic called polyethylene. That makes it too difficult to recycle or compost the paper part of the cup so it must go to a landfill.



Your name or message belongs on our cups and boosts awareness of your brand. Our team is ready to help you, from design to logistics to warehousing. See page 54 for additional details or contact us today.



START PACKAGING™ Client Service 866-226-0584 M-F, 9a-5p ET

info@goodstartpackaging.com

KRAFT PAPER CUPS

Beautiful, natural, artisanal look, these cups are the most eco-friendly and sustainable way to serve your hot drinks.

- Heat resistant up to 220° F
- Natural kraft color; made from unbleached FSC certified paper
- Lined with PLA, a plant-based bioplastic
- Manufacturing process uses about 25% less water and resources than white paper cups
- BPI certified compostable paper



Custom printing available, see page 54 for details.



KRAFT CUPS	8 oz	10 oz	12 oz	16 oz	20 oz
ITEM #	CU-PA-8-K	CU-PA-10-K	CU-PA-12-K	CU-PA-16-K	CU-PA-20-K
DIA. x HEIGHT	3.1" x 3.8"	3.5" x 3.5"	3.5" x 4.3"	3.5" x 5.3"	3.5" x 5.8"
CASE COUNT	1,000	1,000	1,000	1,000	1,000

LID, WHITE, COMPOSTABLE

ITEM #	CUL-CS-8	CUL-CS-12	CUL-CS-12	CUL-CS-12	CUL-CS-12
CASE COUNT	1,000	1,000	1,000	1,000	1,000

TRAVEL LID, BLACK, NONCOMPOSTABLE

ITEM #	N/A	TLB316-0004	TLB316-0004	TLB316-0004	TLB316-0004
DIA. x HEIGHT	N/A	3.7" x 0.7"	3.7" x 0.7"	3.7" x 0.7"	3.7" x 0.7"
CASE COUNT	N/A	1,000	1,000	1,000	1,000

CUP SLEEVE

ITEM #	1200SPN	1100LPN	1100LPN	1100LPN	1100LPN
CASE COUNT	1,300	1,300	1,300	1,300	1,300

COMPOSTABLE LIDS

Most coffee cup lids are made of non-recyclable polystyrene. Our compostable version of hot cup lids are made of CPLA (biodegradable plant starch).

- Can withstand heat up to 180° F



Fiber Carry Trays

see page 6

CUP SLEEVES / JAVA JACKETS

Custom printed coffee cup sleeves are a way to market your brand in the local community.

- 2.5" sleeve height
- Natural kraft; ask about white or glossy sleeves



Custom printing available, see page 54 for details.



Custom-printed Cup Sleeves, The Tasty Spoon Gelateria, Austin, TX

CUPS
HOT

WHITE PAPER CUPS

These paper cups have a natural, artisanal look and are the most eco-friendly and sustainable way to serve your hot drinks.

- Lined with PLA, a plant-based bioplastic
- Made from FSC certified paper
- Heat resistant up to 220° F



Custom printing available, see page 54 for details.



LEARN MORE



WHITE	4 oz	6 oz	8 oz	10 oz	12 oz	16 oz	20 oz
ITEM #	CU-PA-4	CU-PA-6	CU-PA-8	CU-PA-10	CU-PA-12	CU-PA-16	CU-PA-20
DIA. x HEIGHT	2.5" x 2.5"	2.8" x 3.1"	3.1" x 3.8"	3.5" x 3.5"	3.5" x 4.3"	3.5" x 5.3"	3.5" x 5.8"
CASE COUNT	1,000	1,000	1,000	1,000	1,000	1,000	1,000

LID , WHITE, NONCOMPOSTABLE			LID , WHITE, COMPOSTABLE				
ITEM #	VL34R-0007	N/A	CUL-CS-8	CUL-CS-12	CUL-CS-12	CUL-CS-12	CUL-CS-12
CASE COUNT	1,000	N/A	1,000	1,000	1,000	1,000	1,000

TRAVEL LID, BLACK, NONCOMPOSTABLE							
ITEM #	N/A	N/A	N/A	TLB316-0004	TLB316-0004	TLB316-0004	TLB316-0004
CASE COUNT	N/A	N/A	N/A	1,000	1,000	1,000	1,000

CUP SLEEVE							
ITEM #	N/A	N/A	1200SPN	1100LPN	1100LPN	1100LPN	1100LPN
CASE COUNT	N/A	N/A	1,300	1,300	1,300	1,300	1,300

CUPS

HOT



Custom-printed Cup Sleeve, Fresh Press, Loveland, OH



did you know...

Starbucks uses over 8 million paper cups per day. Most disposable cups contain plastic and end up in landfills.



Custom-printed Cup, Spill the Beans, Greenville, South Carolina



Custom-printed Cup, The Meteor, Little Rock, AR



INSULATED PAPER CUPS

These insulated paper coffee cups have a pocket of air between two layers of paper that can eliminate the need for a cup sleeve! Alternatively, use a sleeve too for triple insulation.

- Made from FSC certified paper
- Lined with PLA, a plant-based bioplastic
- Manufacturing process uses about 25% less water and resources than that for white paper cups
- BPI certified compostable paper
- Heat resistant up to 220° F



Custom printing available, see page 54 for details.



CUPS	8 oz	12 oz	16 oz
ITEM #	CU-PA-8D	CU-PA-12D	CU-PA-16D
DIA. x HEIGHT	3.1" x 3.8"	3.5" x 4.3"	3.5" x 5.4"
CASE COUNT	1,000	1,000	600

LID, WHITE, COMPOSTABLE

ITEM #	CUL-CS-8	CUL-CS-12	CUL-CS-12
CASE COUNT	1,000	1,000	1,000

CUP SLEEVE

ITEM #	1200SPN	1100LPN	1100LPN
CASE COUNT	1,300	1,300	1,300



Custom-printed Insulated Cup,
Forge Baking Company, Somerville, MA

COMPOSTABLE LIDS

- Most coffee cup lids are made of non-recyclable polystyrene. Our compostable version of hot cup lids is made of CPLA (biodegradable corn starch)
- Can withstand heat up to 180° F

CUPS
HOT



Dunkin' Donuts is one of the largest users of foam cups (over 4 million per day!) because they believe their customers like that it keeps drinks hotter longer. But that extra insulation comes at a great environmental cost. When you order coffee at Dunkin' Donuts, ask for a paper cup instead of the foam kind. If everyone did this, we would reduce the amount of plastic foam cups that end up in roads, waterways and landfills by 2 billion per year! Send Dunkin' Donuts a message that foam has to go!

CUP SLEEVES / JAVA JACKETS

Custom coffee cup sleeves are an easy and relatively affordable way to market your brand in the local community.

- 2.5" sleeve height
- Natural kraft; ask about white or glossy sleeves



Custom printing available, see page 54 for details.





STRONGHOLDER 4-CUP Molded Fiber Carry Trays

- Trays hold 8 oz to 32 oz cups
- Made from 100% post-consumer recycled paper fibers
- Deeper wells nestle drinks securely
- De-nests quickly
- Store in 30% less space than competitive molded fiber products

FITS 8 oz to 32 oz

ITEM NO.	HUH20938
SIZE	9.75" x 8.37" x 1.62"
CASE QTY	300



RENEWABLE WOOD STIR STICKS

- 7" length

ITEM NO.	ECONTSTC10CCT
CASE QTY	10,000 (1,000/pk; 10pk/ctn)

MOLDED FIBER FOOD AND DRINK CARRY TRAYS

These fiber-molded beverage carriers with a tray offer a single-handed solution for transporting and serving hot or cold beverages and food, filling a whole order in one to-go container. Eco-friendly, they are made from recycled materials and are compostable, saving both time and natural resources.

- Made of molded fiber for strength and to absorb shock
- Cup holder with slotted design holds 8 oz to 22 oz cups
- Tray for holding containers of food, cutlery, and other items
- Stackable for compact storage
- Easy-to-load, de-nests quickly, simplifies order filling while minimizing storage space usage

ONE-CUP Molded Fiber Food and Beverage Carry Trays

FITS 8 oz to 22 oz CUPS

ITEM NO.	HUH20961CT
SIZE	15" x 11" x 2"
CASE QTY	200



TWO-CUP Molded Fiber Food and Beverage Carry Trays

FITS 8 oz to 22 oz CUPS

ITEM NO.	HUH20974CT
SIZE	15" x 11" x 2"
CASE QTY	200



FOUR-CUP Molded Fiber Food and Beverage Carry Trays

FITS 8 oz to 22 oz CUPS

ITEM NO.	HUH20969CT
SIZE	13" x 8.3" x 1.5"
CASE QTY	250



PRODUCTS FOR CONCESSIONS

see page 23

CUPS
HOT





COMPOSTABLE COLD CUPS & LIDS

Avoid harmful chemicals by using biodegradable plastic cups. They're made from an eco-friendly corn plastic (Polylactic Acid) that is natural and healthy to use. These PLA cups are as lightweight and strong as real plastic.

The versatility of our line means you can do more with fewer products. They're good for smoothies, juices, parfaits, fruit cups, puddings, craft beer, iced tea, iced coffee, and other cold drinks. Our compostable cups have multiple lid options, so you can use the same lids for different sized cups.

 [LEARN MORE](#)



Compostable Cold Cup and Lid, South Block Juice, Virginia & Washington, DC

CUPS
COLD



Your name or message belongs on our cups and boosts awareness of your brand. Our team is ready to help you, from design to logistics to warehousing. See page 54 for additional details or contact us today.



Custom-printed Cold Cup, Laney & Lu Cafe, Exeter, NH

COMPOSTABLE COLD BEVERAGE CUPS & LIDS



CUPS
COLD

Eco-friendly
straws

on page 11



BEVERAGE	9 oz SQUAT	10 oz	12 oz	14 oz	16 oz	20 oz	24 oz	32 oz
ITEM #	CP-CS-9Q	CP-CS-10	CP-CS-12	CP-CS-14	CP-CS-16	CP-CS-20	CP-CS-24	CP-CS-32
DIA. x HT.	3.8" x 2.7"	3.8" x 3.1"	3.8" x 4"	3.8" x 4.3"	3.8" x 5"	3.8" x 5.5"	3.8" x 6"	4.25" x 6.5"
CASE COUNT	1,000	1,000	1,000	1,000	1,000	1,000	1,000	300

LIDS, STANDARD W/STRAW HOLE

ITEM #	CPL-CS-12	CPL-CS-12	CPL-CS-12	CPL-CS-12	CPL-CS-12	CPL-CS-12	CPL-CS-12	CPL-CS-32
CASE COUNT	1,000	1,000	1,000	1,000	1,000	1,000	1,000	1,000

LIDS, DOMED W/STRAW HOLE

ITEM #	CPL-CS-12D	CPL-CS-12D	CPL-CS-12D	CPL-CS-12D	CPL-CS-12D	CPL-CS-12D	CPL-CS-12D	N/A
CASE COUNT	1,000	1,000	1,000	1,000	1,000	1,000	1,000	N/A



PLA container,
The Street, Honolulu, HI



Convey a solid branding message to your customers. Our team is ready to help you, from design to logistics to warehousing. See page 54 for additional details or contact us today.



FLAT LID W/STRAW HOLE

FITS 9 oz SQUAT to 24 oz CUPS

ITEM NO.	CPL-CS-12
CASE QTY	1,000

FITS 32 oz CUPS

ITEM NO.	CPL-CS-32
CASE QTY	600



DOMED LID W/STRAW HOLE

FITS 9 oz SQUAT to 24 oz CUPS

ITEM NO.	CPL-CS-12D
CASE QTY	1,000

PLA PORTION CUPS & LIDS

1 oz and 2 oz size are perfect for condiments.

3 oz and 4 oz size are great for serving promotional drink samples or juice shots.

- Made from PLA, a plant based corn plastic
- Light and strong as plastic
- Fully biodegradable and certified compostable
- Need to be stored below 110° F and away from heat, hot surfaces and direct sunlight



1 oz CUPS

DIA. x HT.	1.8" x 1.3"
ITEM	CP-CS-1S
CASE QTY	6,000

1 oz LIDS

N/A	
-----	--



2 oz CUPS

DIA. x HT.	2.5" x 1.2"
ITEM	CP-CS-2S
CASE QTY	2,000

2 oz LIDS

ITEM	CPL-CS-2S
CASE QTY	2,000



3 oz CUPS

DIA. x HT.	2.5" x 2.3"
ITEM	CP-CS-3
CASE QTY	2,500

3 oz LIDS

ITEM	CPL-CS-2S
CASE QTY	2,000



4 oz CUPS

DIA. x HT.	3" x 1.8"
ITEM	CP-CS-4S
CASE QTY	1,000

4 oz LIDS

ITEM	CPL-CS-9F
CASE QTY	1,000



FIBER PORTION CUPS

see page 14

FEATURED SUPPLIER

WORLD  CENTRIC®
For a better world

When it comes to eco-friendly take-out containers, compostable coffee cups, and biodegradable utensils, World Centric is our go-to source for to-go packaging. They top our internal source list for green restaurant supplies.

World Centric has remained a strong advocate for environmental sustainability and social justice, since their inception in 2004.



INDUSTRIAL FACILITIES



DUE TO OFFSETS



TO POSITIVE CHANGE



WE EXIST FOR CHANGE

World Centric is truly an aspiring company to work with and we love collaborating with them to provide the best sustainable packaging solutions for our clients. They strive to provide great products, reliable service and competitive pricing in the fast-paced restaurant industry. World Centric is quick to deliver and fix problems and always prioritizes doing the right thing for both their clients and the environment, which is why we have chosen to partner with them.

They truly stand apart and set the standard for other eco-friendly food packaging manufacturers and we are very fortunate to provide their incredible products to our clients.

What Makes World Centric Unique?

Carbon Offsets. They partner with environmental and social organizations whose programs not only offset their carbon emissions but also create regenerative ecosystems.

Giving. Each year the company donates at least 25% of its pre-tax profits to support projects around the world that promote social and economic development, environmental education and waste reduction.

Manufacturing Audits. They regularly audit outsourced factories under Fair Labor Association guidelines to ensure fair wages and working conditions.

Renewable Energy and Zero Waste Office. They strive to be a zero-waste office by reducing their consumption and diverting waste to compost and recycling. Their office is powered by 100% local, renewable energy provided by Sonoma Clean Power.

Community. They have hosted environmental and social justice speakers and film series since 2004 and regularly host other community events.

PORTION CUPS

COMPOSTABLE PARFAIT / SOUFFLÉ CUPS & LIDS

- Yogurt and granola
- Chia pudding and fruit
- Pretzels and dip
- Salad and dressing
- Pita chips and hummus
- Overnight oats and toppings
- Veggies and dip
- The possibilities are endless...



Parfait Lid



PARFAIT	5 oz	6 oz	7 oz	9 oz	9 oz SQUAT	10 oz
DIA. x HT.	3" x 2.6"	3" x 2.6"	3" x 3.3"	3" x 4.3"	3.8" x 2.7"	3.8" x 3.1"
ITEM #	CP-CS-5	CP-CS-6	CP-CS-7	CP-CS-9	CP-CS-9Q	CP-CS-10
CASE QTY	2,000	2,000	2,000	2,000	1,000	1,000

2 oz CLEAR PARFAIT INSERT

ITEM #	N/A	N/A	N/A	CP-CS-2P	CP-CS-2SF	CP-CS-2SF
CASE QTY	N/A	N/A	N/A	2,000	2,000	2,000

4 oz CLEAR PARFAIT INSERT

ITEM #	N/A	N/A	N/A	N/A	CP-CS-4S	CP-CS-4S
CASE QTY	N/A	N/A	N/A	N/A	1,000	1,000

PARFAIT LID

ITEM #	CPL-CS-9	CPL-CS-9	CPL-CS-9	CPL-CS-9	CPL-CS-12SH	CPL-CS-12SH
CASE QTY	2,000	2,000	2,000	2,000	1,000	1,000

DOMED PARFAIT LID

ITEM #	N/A	N/A	N/A	N/A	CPL-CS-12DP	CPL-CS-12DP
CASE QTY	N/A	N/A	N/A	N/A	1,000	1,000

DOMED PARFAIT LID w/STRAW HOLE

ITEM #	N/A	N/A	N/A	N/A	CPL-CS-12D	CPL-CS-12D
CASE QTY	N/A	N/A	N/A	N/A	1,000	1,000

FLAT LID NO STRAW HOLE

ITEM #	CPL-CS-9F	CPL-CS-9F	CPL-CS-9F	CPL-CS-9F	N/A	N/A
CASE QTY	1,000	1,000	1,000	1,000	N/A	N/A

FLAT LID w/STRAW HOLE

ITEM #	N/A	N/A	N/A	N/A	CPL-CS-12	CPL-CS-12
CASE COUNT	N/A	N/A	N/A	N/A	1,000	1,000

Custom printing available,
see page 54 for details.



CUPS
PARFAIT



Parfait Cup and Lid, Jodi Bee Bakes, Salem, MA



START PACKAGING™ Client Service 866-226-0584 M-F, 9a-5p ET | info@goodstartpackaging.com

PARFAIT INSERTS

This clear insert fits snugly inside a World Centric cold cup. Ideal for keeping parfait toppings separate. You can feel good about serving your treats in these certified compostable containers made from renewable resources.

- Made from PLA, a plant-based corn plastic
- 2 oz or 4 oz option that fit 9 oz to 24 oz cups
- Inserts rest inside cup rim
- Fully biodegrades when composted
- Certified compostable
- Need to be stored below 110° F and away from heat, hot surfaces and direct sunlight



PARFAIT	12 oz	14 oz	16 oz	20 oz	24 oz
DIA. x HT.	3.8" x 4"	3.8" x 4.3"	3.8" x 5"	3.8" x 5.5"	3.8" x 6"
ITEM #	CP-CS-12	CP-CS-14	CP-CS-16	CP-CS-20	CP-CS-24
CASE COUNT	1,000	1,000	1,000	1,000	1,000

2 oz CLEAR PARFAIT INSERT

ITEM #	CP-CS-25F	CP-CS-25F	CP-CS-25F	CP-CS-25F	CP-CS-25F
CASE QTY	2,000	2,000	2,000	2,000	2,000

4 oz CLEAR PARFAIT INSERT

ITEM #	CP-CS-4S	CP-CS-4S	CP-CS-4S	CP-CS-4S	CP-CS-4S
CASE QTY	1,000	1,000	1,000	1,000	1,000

PARFAIT LID

ITEM #	CPL-CS-12SH	CPL-CS-12SH	CPL-CS-12SH	CPL-CS-12SH	CPL-CS-12SH
CASE COUNT	1,000	1,000	1,000	1,000	1,000

DOMED PARFAIT LID

ITEM #	CPL-CS-12DP	CPL-CS-12DP	CPL-CS-12DP	CPL-CS-12DP	CPL-CS-12DP
CASE COUNT	1,000	1,000	1,000	1,000	1,000

DOMED PARFAIT LID w/STRAW HOLE

ITEM #	CPL-CS-12D	CPL-CS-12D	CPL-CS-12D	CPL-CS-12D	CPL-CS-12D
CASE COUNT	1,000	1,000	1,000	1,000	1,000

FLAT LID w/STRAW HOLE

ITEM #	CPL-CS-12	CPL-CS-12	CPL-CS-12	CPL-CS-12	CPL-CS-12
CASE COUNT	1,000	1,000	1,000	1,000	1,000

Shop with confidence...Order samples

Not sure? Most items in this catalog are available as a sample. For details, visit goodstartpackaging.com/samples



ECO-FRIENDLY STRAWS

- Paper straws are coated with beeswax
- Clear straws are made from PLA

PAPER STRAWS

0.2" DIA.	CASE QTY	ITEM #
GREEN	6,000	210CHP21
RED	6,000	210CHP21R
BLACK	3,000	210CHP21BLACK
BLUE	3,000	210CHP21BLUE
PINK	3,000	210CHP21PINK

Straws are unwrapped. Individually wrapped paper straws available; please visit our website for details.

PAPER SMOOTHIE STRAWS

0.3" DIA.	CASE QTY	ITEM #
GREEN	2,000	210CHP8LG
RED	2,000	210CHP8R2
BLACK	2,000	210CHP8BLK

PLA STRAWS

0.25" DIA.	CASE QTY	ITEM #
CLEAR UNWRAPPED	1,000	ST-CS-8
CLEAR WRAPPED	1,000	ST-CS-8W



did you know...

Almost every piece of plastic that was ever made still exists in some shape or form. It takes between 500 and 1,000 years for plastic to degrade. Billions of pounds of plastic can be found in swirling convergences in the oceans, making up about 40% of the world's ocean surfaces. (Source: EcoWatch)

Do your part by offering your customers sustainable, plant-based and eco-friendly packaging, straws and utensils.

CUPS
PARFAIT



FIBER COMPOSTABLE BOWLS

Made from surplus sugarcane and wheatstraw agricultural fiber, these bowls are a sustainable replacement for foam, hard plastic and paper disposables (which are often lined with plastic). Fiber bowls will compost in a commercial composting facility in 1–3 months.



Packaging Made from Plants: Healthy for You, Healthy for the Planet

Our plant fiber-based products are made from sugarcane (bagasse) and wheatstraw fiber. Sugarcane and wheatstraw are not only annually renewable resources, but can also be turned into products normally made from plastic or paper. Bagasse is the sugarcane fiber remaining after extraction of juice from sugarcane and wheatstraw is the remaining plant material after the wheat grain and chaff have been extracted.

Demonstrate your values and show your customers that you care about them and the environment.

BARREL BOWLS

Sizes suitable for ice cream to soups to hot granola to chili.

- Microwave and freezer safe
- Suitable for hot foods up to 220° F
- Soak proof
- FDA food safe
- Conform to FDA guidelines for food use



	8 oz	12 oz	16 oz
FIBER BARREL			
ITEM #	BB-SC-U8	BB-SC-U12	BB-SC-U16
DIA. x HEIGHT	4.5" x 1.75"	4.5" x 2.5"	4.5" x 3.3"
CASE QTY	500	500	500

FIBER LID, BARREL BOWL

ITEM #	BBL-SC-U12	BBL-SC-U12	BBL-SC-U12
CASE QTY	500	500	500



did you know...

Our fiber products' life cycle begins and ends in the same place. Wheatstraw breaks down during composting, making nutrient-rich soil, thereby starting the process all over again.





FIBER ROUND BOWLS

Sizes suitable for cereal to noodles to poké.

- Microwave and freezer safe (PLA clear lids are not)
- Suitable for hot foods up to 220° F
- Soak proof
- FDA food safe



FIBER ROUND	6 oz	11.5 oz	16 oz	24 oz	32 oz
ITEM #	BO-SC-U6	BO-SC-U11	BO-SC-16	BO-SC-U24	BO-SC-U32
DIA. x HEIGHT	3.5" x 2"	5.9" x 1.8"	7.4" x 2"	7.4" x 2.4"	7.4" x 3.152"
CASE QTY	1,000	1,000	500	500	500

LID, FIBER

ITEM #	N/A	N/A	BOL-SC-U24	BOL-SC-U24	BOL-SC-U24
CASE QTY	N/A	N/A	500	500	500

LID, CLEAR, COMPOSTABLE

ITEM #	BOL-CS-8	N/A	BOL-CS-24	BOL-CS-24	BOL-CS-24
CASE QTY	1,000	N/A	300	300	300



NEW FIBER OVAL BOWL

Serve side sauces, dips, and more. You'll find the unique profile a clean and fresh canvas for any type of food.

- Sturdy and strong
- Microwave and freezer safe
- Suitable for hot foods up to 220° F
- Soak proof
- Lid not available

24 oz, 8.75" x 5.5" x 2.5"

ITEM #	BV-SC-U24
CASE QTY	300

NEW SHALLOW FIBER BOWL

Fully compostable, this bowl is a great alternative to foam or hard plastic and is perfect for pasta, soups, salads or veggie noodles!

- 36 oz fiber bowl
- Grease resistant
- Microwave and freezer safe
- Suitable for foods up to 220° F
- Lid not available



36 oz, 9" x 1.5"

ITEM #	BO-SC-365
QTY	400



BOWLS & LIDS
FIBER

Additional Fiber plates...

please see page 33



SQUARE FIBER BOWLS

Looking for something a little different for your take-out food? The unique shape of these square bowls makes for an elegant presentation.

- 100% compostable
- Microwave and freezer safe (PLA clear lids are not)
- Suitable for hot foods up to 220° F
- Soak proof

SQUARE **A** 24 oz **B** 32 oz **C** 48 oz

ITEM #	BQ-SC-24	BQ-SC-32	BQ-SC-48
W x L x D	8.5" x 8.5" x 1.25"	8.5" x 8.5" x 1.875"	8.5" x 8.5" x 2.5"
CASE QTY	400	400	400

LID, CLEAR

ITEM #	BQL-CS-24	BQL-CS-32	BQL-CS-48
CASE QTY	200	200	200

LID, FIBER

ITEM #	BQL-SC-24	BQL-SC-32	BQL-SC-48
CASE QTY	400	400	400

BOWLS & LIDS
FIBER

FIBER PORTION / SOUFFLÉ CUPS & LIDS

The perfect companion for condiments, salsa, guacamole and more!



ROUND 2 oz 4 oz

ITEM #	CU-SC-U2	CU-SC-U4
DIA. x HEIGHT	2.4" x 1.3"	3" x 1.8"
CASE QTY	2,000	1,000

LID, FIBER

ITEM #	CUL-SC-2	CUL-SC-U4
CASE QTY	2,000	1,000

LID, PLA, FLAT

ITEM #	CPL-CS-2S	CPL-CS-9F
CASE QTY	2,000	1,000



shop with confidence...order samples

Not sure? Most items in this catalog are available as a sample. For details, visit goodstartpackaging.com/samples



PLA (clear) portion cups

see page 29



utensils and napkins

see pages 35-36

PAPER BOWLS / CONTAINERS & LIDS

Made from 100% renewable resources and compostable, these containers make a great addition to your take-out packaging, perfect for everything from hot soups to ice cream.

Traditional paper bowls are lined with polyethylene (derived from natural gas production) so they are neither recyclable nor compostable.

About the Paper Bowls

- Lined with PLA, a plant-based bioplastic
- Sturdy
- Leak-proof
- Suitable for hot foods up to 220°F
- Microwave, freezer safe
- Paper sourced from FSC certified forests

About the Lids

- Lids are one of the industry's only available that are compostable
- Lids are freezer safe, but not microwave safe
- Lids are sold separately



	8 oz	12 oz	16 oz	24 oz	32 oz
PAPER CUPS					
DIA. x HEIGHT	3.5" x 2.4"	4.5" x 2.5"	4.5" x 3"	4.5" x 4.5"	4.5" x 5.8"
ITEM #	BO-PA-8	BO-PA-12	BO-PA-16	BO-PA-24	BO-PA-32
CASE QTY	1,000	500	500	500	500

A FLAT LID, CPLA (SUITABLE FOR HOT FOODS)

ITEM #	BOL-CS-8	BOL-CS-12	BOL-CS-12	BOL-CS-12	BOL-CS-12
CASE QTY	1,000	1,000	1,000	1,000	1,000

B DOMED LID, PLA (NOT SUITABLE FOR HOT FOODS)

ITEM #	BOL-CS-8D	BOL-CS-12D	BOL-CS-12D	BOL-CS-12D	BOL-CS-12D
CASE QTY	1,000	500	500	500	500

KRAFT PAPER CONTAINERS & LIDS

- Made from heavy, grease-resistant kraft paper
- Suitable for either hot or cold foods
- Freezer and microwave safe
- Clean paper surface allows you to use your own sticker label
- Lids included

	16 oz / PINT	32 oz / QUART
DIA. x HEIGHT	3.7" x 4"	4.6" x 5.3"
ITEM #	210SOUPCOK16	210SOUPCOK32
CASE QTY	500	250



PAPER BOWLS & LIDS



CLEAR (PLA) BOWLS

These clear, compostable plastic bowls and lids are great for to-go and custom, build-your-own salads and salad bars.

They have an attractive shape, and are also practical for tossed salads, allowing the dressing to move around and coat the salad greens. Or add a portion cup of dressing or toppings.

These containers are as light and strong as plastic and have tight sealing lids.

- Made from PLA, a compostable plastic derived from corn grown in the United States
- Suitable for food up to 110° F
- Freezer safe
- Not microwaveable
- Because of their nature, these bowls need to be stored in cool areas, away from direct sunlight
- Compostable in 2–4 months in a commercial composting facility



SALAD BOWLS

	A 16 oz	B 24 oz	C 32 oz	D 48 oz
DIA. x HEIGHT	5.5" x 2.75"	6.75" x 2.75"	6.8" x 3.3"	6.8" x 4.4"
ITEM #	SB-CS-16	SB-CS-24	SB-CS-32	SB-CS-48
CASE QTY	450	600	300	300

LID

ITEM #	SBL-CS-16	SBL-CS-32	SBL-CS-32	SBL-CS-32
CASE QTY	600	600	600	600

WHY

Should You Use Compostable Plastic vs. Traditional Plastic Containers?

Compostable containers, similar to their plastic counterparts, don't break down in a reasonable amount of time in a landfill.

If your city does not have a commercial compost service, there are still many benefits from using compostables. A lot of these benefits occur before the product is even used by the consumer. Compostable food service products come from renewable resources like corn, sugarcane, bulrush or paper. These solutions don't contain any of the toxic chemicals used in many traditional plastics.

Many sustainable packaging alternatives also use less energy to produce than plastic containers. For example, PLA (a bioplastic) for clear containers uses 68% less energy than traditional plastic. Finally, compostable food service products send a powerful buying signal into the marketplace to progress towards a more sustainable, plastic-free future.



PLA "Beli style" containers...

see page 28



FIBER BURRITO BOWLS

Similar to the Chipotle Burrito Bowl in its design, our trendy, eco-friendly, compostable, oval to-go containers with lids are made from renewable plant fibers—bagasse (from sugarcane) and wheatstraw (the stalks, not the grain that causes allergic reactions). These natural materials have the strength to handle both hot and cold items. With so many ways to fill them, you'll never run out of variations that delight your customers!

Our Burrito Bowls are

- Microwave and freezer safe
- Suitable for hot or cold items
- Soak proof, yet not lined with any plastic or wax
- Please note that hot foods will cause the bowls to "perspire" on the outside and some condensation will form
- Can handle hot liquids up to 220° F
- Meet ASTM D-6400 standard for compostability
- Meet FDA standards for food contact
- Gluten free
- PLA (clear lids), safe up to 120° F, but are not microwave or oven safe



32 oz Burrito Bowl,
DosBros Fresh Mexican Grill, Cleveland, TN



BURRITO BOWLS

	A 24 oz	B 32 oz
L x W x HEIGHT	8" x 5.35" x 1.57"	9.7" x 6.3" x 1.5"
ITEM #	BO-SC-UBBS	BO-SC-UBB
CASE QTY	400	300

FIBER LID

ITEM #	N/A	BOL-SC-UBB
CASE QTY	N/A	300

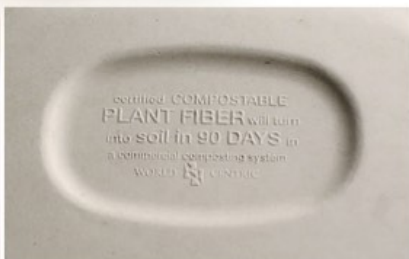
PLA (CLEAR) LID

ITEM #	BOL-CS-UBBS	BOL-CS-UBB
CASE QTY	400	300

BOWLS & LIDS
BURRITO



24 oz Burrito Bowl,
Choices Cafe, Coconut Grove, FL



Visit our website for additional eco-friendly products and pricing or to request a sample goodstartpackaging.com



NEW CLAMSHELLS FOR TACOS



Your name or message belongs on our clamshells to boost awareness of your brand. Our team is ready to help you, from design to logistics to warehousing. See page 54 for additional details or contact us today.

TAKEOUT
CLAMSHELLS



CLAMSHELLS FOR FLATBREADS



CLAMSHELLS FOR HOAGIES



FIBER TAKE OUT CLAMSHELLS

These containers are 100% compostable because they're made from unbleached surplus sugarcane and wheatstraw agricultural plant fiber. They are made by World Centric, an excellent company that never strays from their mission and nonprofit roots to help the environment.

We believe these are some of the most eco-friendly, sustainable replacements for plastic and foam food clamshell packaging you can buy. You'll love the versatility of these beautiful boxes and the various sizes and options for your food business!

Features of Clamshells made from fiber

- Made from unbleached plant fiber
- Nontoxic: Meet FDA standards for food contact
- Microwave and freezer safe
- Can be used for hot and cold items
- Wheatstraw is a heavier fiber that is ideal for use in packaging high moisture, heavier content foods
- Oven safe up to 350° F and can handle hot liquids up to 220° F
- No plastic or wax lining, yet are soak proof
- Meet ASTM D-6400 standard for commercial use
- Biodegradable Products Institute certified compostable
- Compostable in 1–3 months in a commercial composting system (ASTM D-6400 and BPI certified)
- Gluten-free



Custom printing available, see page 54 for details.



TAKEOUT
CLAMSHELLS

← SPECIALTY CLAMSHELLS



A TACO / THREE COMPARTMENTS

SIZE	ITEM #	CASE QTY
8" x 7" x 3"	TO-SC-T3	300

B FLATBREAD / PIZZA BOX

SIZE	ITEM #	CASE QTY
13.5" x 6.5" x 1.25"	PB-SC-U13	200

C HOAGIE

SIZE	ITEM #	CASE QTY
9" x 6" x 2.5"	TO-SC-UHB	200



Visit our website for additional eco-friendly products and pricing or to request a sample goodstartpackaging.com

Shop with confidence...order samples

Not sure? Most items in this catalog are available as a sample.
For details, visit goodstartpackaging.com/samples



FIBER CLAMSHELLS

SINGLE COMPARTMENT



6" x 6" x 3"

ITEM #	TO-SC-U15B
CASE QTY	300



8.5" x 8" x 3"

ITEM #	TO-SC-U85-3
CASE QTY	300

9" x 9" x 3"

ITEM #	TO-SC-U9
CASE QTY	300

9" x 9" x 3" HEAVYWEIGHT

ITEM #	TO-SC-U9H
CASE QTY	300

DOUBLE COMPARTMENT



9" x 6" x 3"

ITEM #	TO-SC-U34D
CASE QTY	500

TRIPLE COMPARTMENT



8.5" x 8" x 3"

ITEM #	TO-SC-U8T
CASE QTY	300

9" x 9" x 3.3"

ITEM #	TO-SC-U9T
CASE QTY	300

TAKEOUT
CLAMSHELLS



Boost awareness of your brand by printing your name or message on our clamshells and. Our team is ready to help you, from design to logistics to warehousing. See page 54 for additional details or contact us today.



Packaging Made from Plants: Healthy for You, Healthy for the Planet

About Miscanthus:
Miscanthus (silver grass) is a large, perennial, noninvasive grass crop resembling bamboo that thrives with minimal care and water. It is grown on non-food producing American farmland. Once planted, it produces a harvest each year for 15+ years, thereby supporting both manufacturing jobs and farmers who are earning income on marginal land that would otherwise be lost to development or go idle.

Aloterra and World Centric are the only companies that are manufacturing and marketing a food service ware line made from miscanthus.



MISCANTHUS CLAMSHELLS

As more loyal customers are demanding a smaller carbon footprint from their favorite chain or local restaurant, sustainable agribusiness leader, Aloterra, and compostable food service ware innovator, World Centric, have partnered to develop this line of certified compostable food service ware made from miscanthus plant fiber.

- Made in the U.S. from a blend of 70% silver grass and 30% Sustainable Forestry Initiative Certified wood fiber
- Share the same properties and benefits as our wheatstraw fiber clamshells

SINGLE COMPARTMENT

SIZE	ITEM #	CASE QTY
A 6" x 6" x 3.3"	TO-MC-6	250
B 8.5" x 8" x 3"	TO-MC-8	200
C 9" x 9" x 3.3"	TO-MC-9	200
D 9" x 6" x 3"	TO-MC-96	200

TWO COMPARTMENTS

SIZE	ITEM #	CASE QTY
E 9" x 6" x 3"	TO-MC-96D	200



 **PAPER BAGS FOR
Take-out Orders**

see page 40

TAKEOUT
CLAMSHELLS

Packaging Made from Plants: Healthy for You, Healthy for the Planet

About PLA
PLA (Polylactide) is a plastic-like resin made from 100% U.S. grown corn, an annually renewable resource. Products made from this bioplastic are biodegradable and have characteristics similar to polypropylene, polyethylene, or polystyrene.

Why put your food in containers made from petroleum-based plastic? Your food comes from nature and so should its packaging!



PLA (CLEAR) CLAMSHELLS

These hinged PLA clamshells are made from 100% U.S. grown corn. With the same look and feel as clear plastic clamshells, our PLA clamshells will completely compost under commercial composting conditions in just 45–60 days.

Showcase your beautifully prepared food. Excellent for delis, salad bars, and bakeries.

- Made from PLA, a corn-based plastic
- Can handle food up to 110° F
- Nontoxic
- As light and strong as plastic
- Great for stacking
- Certified compostable

SINGLE COMPARTMENT


SIZE	ITEM #	CASE QTY
A 6" x 6" x 3.3"	KL-CS-6	250
B 7" x 7" x 3.3"	KL-CS-7	250
C 8" x 8" x 3"	KL-CS-8	250
D 9" x 5" x 3.5"	KL-CS-95	250

THREE COMPARTMENTS

SIZE	ITEM #	CASE QTY
E 8" x 8" x 3"	KL-CS-8T	200

TAKEOUT
CLAMSHELLS



 More PLA containers:

Deli-style containers: see page 28
Salad Bowls: see page 29
Portion Cups: see page 29



ECO-FRIENDLY CONCESSION PRODUCTS

Traditional snack shacks to actual gourmet stands looking to minimize their impact on the environment will appreciate these biodegradable and compostable products.

FIBER COMPARTMENT TRAYS

- Nontoxic
- Great for stacking
- Certified compostable
- Can handle food up to 220° F
- PLA lined trays offer extra soak-proof and grease resistance



TWO COMPARTMENTS

8.5" x 6.5" x 1.75"	
ITEM #	TR-SC-17D
CASE QTY	500



8.5" x 6.5" x 2.25"	
ITEM #	TR-SC-22D
CASE QTY	500



8.5" x 6.5" x 2.75"	
ITEM #	TR-SC-27D
CASE QTY	500



THREE COMPARTMENTS

8" x 6" x 1.5"	
ITEM #	TR-SC-UT
CASE QTY	500



9.8" x 7.5" x 1.5"	
UNLINED	
ITEM #	TR-SC-U10T
CASE QTY	400



PLA LINED	
ITEM #	TR-SC-U10TL
CASE QTY	400

FIBER MEAL TRAYS

Suitable for cafés, commissaries, daycares and schools for a well-balanced meal presentation.

- Nontoxic
- Chlorine free
- Great for stacking
- Certified compostable
- Durable and secure enough for hot and cold foods



5 COMPARTMENTS

10.3" x 8.3" x 1.0"	
ITEM #	TR-SC-UF
CASE QTY	400



Meal compartment trays with Lids

see page 25



see page 6

PAPER ECO-FOOD TRAYS

Single-use, paperboard tray for hot and cold foods.

- Beige and white checked pattern
- Made of CCK (clay-coated kraft) paper
- Contain at least 18% recycled wood fiber content
- Other styles and sizes available; please visit our website



	W x L x H	ITEM #	CASE QTY
#50 (1/2 lb)	4.3" x 3.25" x 1.25"	0509	1,000
#250 (2 1/2 lb)	6.6" x 4.6" x 1.6"	0521	500

TAKEOUT TRAYS

FIBER TO-GO TRAYS & LIDS

Fiber compostable trays with lids make excellent containers for prepared meals, frozen dinners, and food delivery services. Sturdy, versatile, and best of all, eco-friendly. You'll love the versatility of these beautiful boxes for your food business!

- Made of compostable, natural fibers from harvested wheat
- Nontoxic, eco-friendly
- Do not contain plastic or wax linings, yet they're fully soak proof
- Microwave and oven safe; clear lids are not
- Unlike hard plastic and foam containers, no harmful chemicals will leach into the food
- Trays available with clear or fiber lids



FEEDING A CROWD?
Fiber catering trays with lids
on page 48

CELEBRATING
WITH
SUSTAINABLE
PACKAGING
GREAT FOOD



Fiber To-Go Boxes, Laney & Lu Cafe, Exeter, NH

SINGLE COMPARTMENT FIBER TRAYS



UNLINED		12 oz 6.5" x 5" x 1.5"		24 oz 8" x 6" x 1.5"		36 oz 9.52" x 7" x 1.75"		40 oz 9.8" x 7" x 1.5"		60 oz 9.8" x 7" x 1.5"	
CASE QTY	ITEM #	600	TR-SC-UAR	400	TR-SC-U8	400	TR-SC-36	400	TR-SC-U10	400	TR-SC-60

PLA LINED FOR ENHANCED LEAK RESISTANCE

CASE QTY	ITEM #	—	N/A	400	TR-SC-U8L	—	N/A	400	TR-SC-U10L	—	N/A
----------	--------	---	-----	-----	-----------	---	-----	-----	------------	---	-----

LIDS, PLA

CASE QTY	ITEM #	—	N/A	400	TRL-CS-8	—	N/A	400	TRL-CS-10	400	TRL-CS-10
----------	--------	---	-----	-----	----------	---	-----	-----	-----------	-----	-----------

LIDS, FIBER

CASE QTY	ITEM #	600	TRL-SC-UAR	—	N/A	400	TRL-SC-10D	400	TRL-SC-10	400	TRL-SC-10
----------	--------	-----	------------	---	-----	-----	------------	-----	-----------	-----	-----------

MULTI-COMPARTMENT FIBER TRAYS



UNLINED		20 oz, 8" x 6" x 1.5"		40 oz, 10" x 7.5" x 1.5"	
CASE QTY	ITEM #	400	TR-SC-U8D	400	TR-SC-U10T

LIDS, PLA

CASE QTY	ITEM #	400	TRL-CS-8D	400	TRL-CS-10T
----------	--------	-----	-----------	-----	------------

LIDS, FIBER

CASE QTY	ITEM #	—	N/A	400	TRL-SC-10
----------	--------	---	-----	-----	-----------



Fiber Compartment Trays, HighWater Fresh Bar, Paducah, KY

TAKEOUT
TRAYS WITH LIDS



NEW MEAL COMPARTMENT FIBER TRAYS W/ LIDS

TWO COMPARTMENTS

SIZE	ITEM #	CASE QTY
A 9.34" x 7.06" x 1.52"	TR-SC-U10D	400
C FIBER LID, 1.5" H	TRL-SC-10D	400



THREE COMPARTMENTS

SIZE	ITEM #	CASE QTY
B 9.34" x 7.06" x 1.52"	CT-SC-16T	400
C FIBER LID, 1.5" H	TRL-SC-10D	400





Fiber Tray with PLA Lid, Laney & Lu Cafe, Exeter, NH



Fiber Trays,
The Pivotal Plate, Toms River, NJ



FIBER BOXES WITH LIDS

These containers offer the same features and benefits as our fiber trays with lids, but with a deeper depth.

- PLA lined boxes are suggested for use with foods having a high liquid (oils, sauces, etc.) content for added soak-resistance and durability during transport

SINGLE COMPARTMENT



			20 oz	40 oz	48 oz			
FIBER BOX			8.8" x 6.8" x 1.75"	8.8" x 6.8" x 2.3"	8.8" x 6.8" x 3"			
PLA LINED	CASE QTY	ITEM #	400	CT-SC-20L	400	CT-SC-U2L	400	CT-SC-U3L
UNLINED	CASE QTY	ITEM #	400	CT-SC-20	400	CT-SC-U2	400	CT-SC-U3
FIBER LID	CASE QTY	ITEM #	400	CTL-SC-U3	400	CTL-SC-U3	400	CTL-SC-U3
PLA LID	CASE QTY	ITEM #	400	CTL-CS-3	400	CTL-CS-3	400	CTL-CS-3

TAKEOUT
TRAYS WITH LIDS



TWO COMPARTMENT FIBER BOX



			24 oz	
FIBER BOX			8.8" x 6.8" x 1.75"	
UNLINED	CASE QTY	ITEM #	400	CT-SC-24D
FIBER LID			400	CTL-SC-U3
PLA LID	CASE QTY	ITEM #	400	CTL-CS-3

shop with confidence...order samples

Not sure? Most items in this catalog are available as a sample.
For details, visit goodstartpackaging.com/samples





Choosing products made from plants, not petroleum, conserves oil resources and supports cleaner production while protecting our health.



CELEBRATING WITH SUSTAINABLE PACKAGING GREAT FOOD

PLA Deli Container, Kunahmul Organics, Toronto, Ontario, Canada



PLA (CLEAR) DELI CONTAINERS

TAKEOUT
CLEAR DELI

By using compostable plastic deli containers made from corn plastic (Polylactic Acid) you can cut out the toxins and switch to a material that is natural and healthy to use—for you, your customers, and for the environment! Demonstrate your values and show your customers that you care about them and the environment.

- Light and strong as plastic
- Have tight sealing lids
- Can handle food temperatures up to 110° F
- Because of their nature, they need to be stored in cool areas, away from direct sunlight



Visit our website for additional eco-friendly products and pricing or to request a sample goodstartpackaging.com

RECTANGULAR PLA CONTAINERS & LIDS



RECTANGLE		8 oz		12 oz		16 oz		24 oz	
LxWxHT		5.9" x 4.9" x 1.5"		5.9" x 4.9" x 2"		5.9" x 4.9" x 2.8"		7.6" x 6.5" x 2"	
CASE QTY	ITEM #	900	RD-CS-8	900	RD-CS-12	900	RD-CS-16	600	RD-CS-24

LIDS

CASE QTY	ITEM #	900	RDL-CS-8	900	RDL-CS-8	900	RDL-CS-8	600	RDL-CS-24
----------	--------	-----	----------	-----	----------	-----	----------	-----	-----------



RECTANGLE		32 oz		48 oz		64 oz	
LxWxHT		7.6" x 6.5" x 2.8"		9" x 7.4" x 2.9"		9" x 7.4" x 3.3"	
CASE QTY	ITEM #	600	RD-CS-32	400	RD-CS-48	400	RD-CS-64

LIDS

CASE QTY	ITEM #	600	RDL-CS-24	400	RDL-CS-48	400	RDL-CS-48
----------	--------	-----	-----------	-----	-----------	-----	-----------



ROUND PLA CONTAINERS & LIDS



ROUND		8 oz		12 oz		16 oz		24 oz		32 oz	
DIA. x HEIGHT		4.8" x 1.8"		4.8" x 2.2"		4.8" x 2.8"		4.8" x 4.38"		4.8" x 5.5"	
CASE QTY	ITEM #	1,000	DC-CS-8	1,000	DC-CS-12	1,000	DC-CS-16	500	DC-CS-24	500	DC-CS-32

LIDS

CASE QTY	ITEM #	1,000	DCL-CS-12	1,000	DCL-CS-12	1,000	DCL-CS-12	1,000	DCL-CS-12	1,000	DCL-CS-12
----------	--------	-------	-----------	-------	-----------	-------	-----------	-------	-----------	-------	-----------



 **utensils and napkins**

see pages 35-36

shop with confidence...order samples

Not sure? Most items in this catalog are available as a sample.
For details, visit goodstartpackaging.com/samples



PLA SALAD BOWLS & LIDS

These containers are as light and strong as plastic and have tight sealing lids. Suitable for any cold food items: noodles, pasta, salads—the practical shape allows the dressing to move around and coat the greens. Or add a portion cup of dressing or toppings.

- Made from PLA, a compostable plastic derived from corn grown in the United States
- Suitable for food up to 110° F
- Freezer safe
- Not microwaveable
- Because of their nature, these bowls need to be stored in cool areas, away from direct sunlight
- Compostable in 2–4 months in a commercial composting facility



SALAD BOWLS

	16 oz	24 oz	32 oz	48 oz
DIA. x HEIGHT	5.5" x 2.75"	6.75" x 2.75"	6.8" x 3.3"	6.8" x 4.4"
CASE QTY ITEM #	450 SB-CS-16	600 SB-CS-24	300 SB-CS-32	300 SB-CS-48

LID

CASE QTY ITEM #	450 SBL-CS-16	600 SBL-CS-32	600 SBL-CS-32	600 SBL-CS-32
-----------------	---------------	---------------	---------------	---------------

PLA SUSHI BOX

These black bottom with clear lid containers are an eco-friendly option for to-go sushi serving.

- Made from PLA, a bioplastic derived from corn grown in the United States
- Fully compostable
- Heat tolerance 105° F



7" x 5" x 2" (40 oz)

ITEM #	SU-CS-75
CASE QTY	300



PORTION / SOUFFLÉ CUPS FOR DRESSINGS AND CONDIMENTS

1 oz and 2 oz size are perfect for condiments.
3 oz and 4 oz size are ideal for pre-
portions of sauces, salsa and more.

PLA portion cups

- Made from PLA, a plant-based corn plastic
- Light and strong as plastic
- Certified compostable; fully biodegradable
- Need to be stored below 110° F and away from heat, hot surfaces and direct sunlight

Fiber portion cups

- Made from unbleached plant fiber
- Nontoxic
- Soak proof
- Compostable



PLA CUPS	A 1 oz	B 2 oz	3 oz	C 4 oz
DIA. x HEIGHT	1.8" x 1.3"	2.5" x 1.2"	2.5" x 2.3"	3" x 1.8"
CASE QTY ITEM #	3,000 CP-CS-1S	2,000 CP-CS-2S	2,500 CP-CS-3	1,000 CP-CS-4S
LID, PLA				
CASE QTY ITEM #	—	N/A	2,000 CPL-CS-2S	1,000 CPL-CS-9F

FIBER CUPS	D 2 oz	E 4 oz
DIA. x HEIGHT	2.4" x 1.3"	3" x 1.8"
CASE QTY ITEM #	2,000 CU-SC-U2	1,000 CU-SC-U4
LID, FIBER		
CASE QTY ITEM #	2,000 CUL-SC-2	1,000 CUL-SC-U4
LID, PLA, FLAT		
CASE QTY ITEM #	2,000 CPL-CS-2S	1,000 CPL-CS-9F



Paper to-go bags

see page 41

TAKEOUT
CONTAINERS & LIDS



COMPOSTABLE PAPER LUNCH BOX

Any meal packed in this box adds sophistication to your takeout and catering service.

- Made from chlorine-free, renewable resource kraft paper
- Window is made of natural, compostable acetate (wood-based film)
- Printed with water-based inks

W x L x D	ITEM #	CASE QTY
9.25" x 7.3" x 3.125"	2449	200

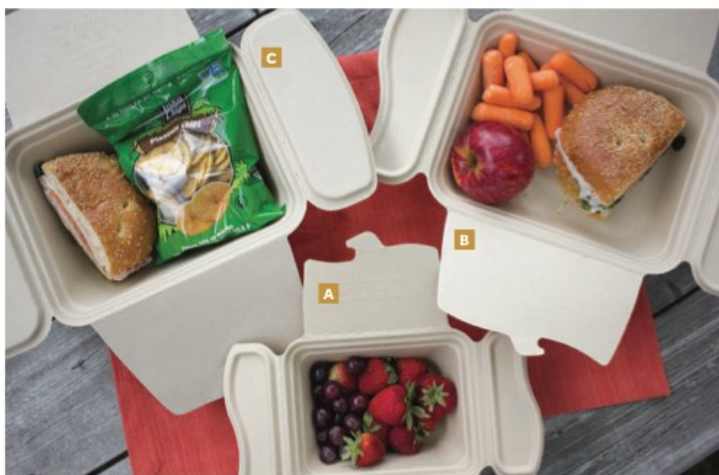


FIBER COMPOST-A-PAK FLAP CONTAINERS

Looking for something a little different for your take-out food? An eco-friendly alternative to standard paper fold-top boxes, these one-piece folding containers are made from the same compostable fiber as our other products. You'll find many great uses, from appetizers, to sandwiches, to boxed lunches, desserts, and more.

- 100% compostable
- One-piece design requires no assembly
- Flaps open wide for free access to contents
- Durable construction
- Retains heat, vents steam
- Microwave and freezer safe
- Suitable for hot foods up to 220° F
- Soak proof
- Save space

SIZE			ITEM #	CASE QTY
A	6" x 5" x 2.75"	24 OZ	FP-SC-1	200
B	8.75" x 7.25" x 2"	48 OZ	FP-SC-2	200
C	8.5" x 6.6" x 3"	64 OZ	FP-SC-U3	200





RETRO PAPER CARRYOUT BOX

Traditional to-go boxes with integrated lid.

- Four-flap tuck closure
- Poly-coated interior
- Made from chlorine free, renewable resource paper



KRAFT		4.37" x 3.5" x 2.5"	7.75" x 5.5" x 1.87"	7.75" x 5.5" x 2.5"	7.75" x 5.5" x 3.5"				
CASE QTY	ITEM #	450	SCH0761	600	SSCH0762	200	SCH0773	160	SCH0764



WHITE		4.37" x 3.5" x 2.5"		7.75" x 5.5" x 1.87"		7.75" x 5.5" x 2.5"		7.75" x 5.5" x 3.5"	
CASE QTY	ITEM #	300	SCH0771	200	SCH0772	—	N/A	200	SCH07714

PAPER CARRYOUT BOX

Handsome design with integrated lid.

- Tuck-top lock closure
- Poly-coated interior
- Nesting storage



WHITE		4.37" x 3.5" x 2.5"	7" x 4.5" x 2.75"	7.75" x 5.5" x 1.87"	7.75" x 5.5" x 2.5"	7.75" x 5.5" x 3.5"	9" x 5" x 4"						
CASE QTY	ITEM #	450	SCH0741	500	SCH2717	200	SCH0742	200	SCH0743	160	SCH0744	250	SCH2757



BROWN		4.37" x 3.5" x 2.5"	7" x 4.5" x 2.75"	7.75" x 5.5" x 1.87"	7.75" x 5.5" x 2.5"	7.75" x 5.5" x 3.5"	9" x 5" x 4"						
CASE QTY	ITEM #	450	SCH0731	—	N/A	500	SCH0732	200	SCH0733	200	SCH0734	—	N/A

PAPER
TAKEOUT

BARN BOXES

Also called gable boxes, the convertible locking feature on the handles allows the top of the box to fold flat for stacking and transport.

- Sturdy paperboard construction
- Keep food hot and fresh
- Please visit our website for additional styles/sizes



WHITE		8.87" x 4.87" x 3.5"	9.06" x 7.06" x 5"		
CASE QTY	ITEM #	250	SCH2729	125	SCH2715



The tree-based paper with the smallest environmental impact is unbleached 100% post-consumer waste paper (PCW paper) while the tree-based paper with the largest environmental impact comes from virgin wood logged in old-growth forests.



SERVICE WARE

FIBER PLATES

You won't sacrifice strength or reliability when you switch from plastic to our sustainable fiber plates.

Features:

- Fiber plates are made from surplus sugarcane and wheatstraw or miscanthus agricultural fiber
- Usable for foods up to 220° F
- No plastic or wax lining, yet soak proof
- Grease and cut resistant
- Microwave and freezer safe
- Gluten free
- Conform to FDA guidelines for food use
- Compostable in 1-3 months in a commercial composting system (ASTM D-6400 and BPI certified)



SQUARE PLATES

	7"	9"	10"
ITEM #	SQ-SC-7	SQ-SC-9	SQ-SC-10
QTY	1,000	500	500

ROUND PLATES



	6"	7"	9"	9" Miscanthus	10"
ITEM #	PL-SC-U6	PL-SC-U7	PL-SC-U9	PL-MC-9	PL-SC-U10
QTY	1,000	1,000	1,000	1,000	800

	9"	10"
ITEM #	PL-SC-9T	PL-SC-U10T
QTY	1,000	700

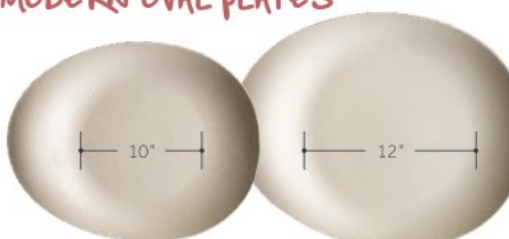
SERVICE WARE
PLATES

OVAL PLATES



	9" x 6.5"	10" x 7"	12" x 10"
ITEM #	PL-SC-U9O	PL-SC-U10O	PL-SC-U12O
QTY	1,000	500	500

MODERN OVAL PLATES



	10" x 12"	12" x 14.25"
ITEM #	OV-SC-10	OV-SC-12
QTY	400	200

PARTY PLATES WITH WINE GLASS OR CUP HOLDER

The ideal solution for social and business events. Guests will enjoy the single-handed convenience of a plate and beverage holder—especially on the buffet line.

PARTY PLATE	7" WINE	9" CUP
ITEM #	PL-SC-7WN	PL-SC-9CUP
CASE QTY	1,000	500



NEW FIBER OVAL BOWL

Serve side sauces, dips, and more. You'll find the unique profile a clean and fresh canvas for any type of food.

- Sturdy and strong
- Microwave and freezer safe
- Suitable for hot foods up to 220° F
- Soak proof; lined with PLA, a plant-based bioplastic

FIBER, OVAL, 24 oz

L x W x HT	8.75" x 5.5" x 2.5"
ITEM #	BV-SC-U24
CASE QTY	300



NEW SHALLOW FIBER BOWL

Fully compostable, this bowl is a great alternative to foam or hard plastic and is perfect for pasta, soups, salads, or veggie noodles!

- 36 ounce fiber bowl
- Grease resistant
- Microwave and freezer safe
- Suitable for foods up to 220° F

FIBER, SHALLOW 36 oz

DIA x HT	9" x 1.5"
ITEM #	BO-SC-36S
QTY	400



did you know...

Imagine if you used about 15 disposable plates every week (800 per year). By choosing disposable plates made from wheatstraw instead of disposable plates made from foam, you would be choosing to:

- Prevent approximately 9.8 pounds of carbon dioxide emissions into the atmosphere, similar to the amount of CO₂ that 1.3 trees would absorb in a year
- Save approximately 132 kilowatt-hours of electricity—enough to power a house for 4.5 days



COMPOSTABLE UTENSILS FORK, SPOON, KNIFE AND SPORK

- Made from tPLA, 100% non-GMO plant starch
- Heat resistant up to 200° F
- Premium feel

INDIVIDUAL	SIZE	UNWRAPPED		WRAPPED	
		CASE QTY	ITEM #	CASE QTY	ITEM #
FORK	6.3"	1,000	FO-PS-6	750	FO-PS-I
KNIFE	6.5"	1,000	KN-PS-6	750	KN-PS-I
SPOON	6"	1,000	SP-PS-6	750	SP-PS-I
SOUP SPOON	6"	1,000	SO-PS-B	750	SO-PS-I
SPORK	6"	1,000	RK-PS-B	—	N/A

WRAPPED SETS	ITEM #	CASE QTY
FORK/KNIFE/NAPKIN	AS-PS-FKN	500
FORK/KNIFE/SPOON/NAPKIN	AS-PS-TN	250

Wrapper is compostable too!



To produce 2 PLA forks requires the same amount of energy needed to make just 1 petroleum-based plastic fork!



Utensils Made from Plants: Healthy for You, Healthy for the Planet

Traditional plastics are made from petroleum, the world's most valuable, non-renewable resource. Our utensils are made from tPLA or "corn plastic," an annually renewable resource, not oil. tPLA utensils are compostable and biodegradable, and will take 120+ days to compost in a commercial composting facility. (Home composting is not recommended—it may take 1 to 2 years to compost in a home composting system.)

Unlike other "sustainable" utensils that contain plastic and other fillers, our utensils contain only plant starch and talc, a natural mineral, so they are compostable.



SERVICE WARE
UTENSILS

SPECIALTY SPOONS



3" TASTER SPOONS

- Perfect addition to any food establishment to offer samples and increase your business
- 1/4 teaspoon

SIZE	3"
ITEM #	SP-CS-3
CASE QTY	3,000



WHITE COLD FOOD SPOONS

- Ideal for cold foods (ice cream, gelato)
- Suitable for foods up to 120° F
- Made from tPLA, 100% non-GMO plant starch

SIZE	6"
ITEM #	SP-CS-WH
CASE QTY	1,000



ASIAN SOUP SPOONS

- Great for soups or small bites presentations

SIZE	6"
ITEM #	SP-TP-AS
CASE QTY	500

Visit our website for additional eco-friendly products and pricing or to request a sample goodstartpackaging.com

LUNCH & DINNER NAPKINS

WHITE



1/4-FOLD LUNCH NAPKINS, WHITE

- Budget price and absorbent

SIZE	13" x 11" UNFOLDED, 1-PLY
ITEM#	BWK8310
QTY	6,000/CTN



DINNER NAPKINS, WHITE

- Linen-like texture

SIZE	16" x 16" UNFOLDED, 2-PLY
ITEM#	HFM125023
QTY	1,000/CTN

KRAFT

World Centric's unbleached, recycled paper napkins are made from 100% post-consumer waste (PCW) recycled paper. Unbleached natural paper means they are not put through any processes that may contain chlorine or other chemicals. Super soft, absorbent and eco-friendly, these napkins do not use any virgin wood fiber.



DINNER NAPKINS, UNBLEACHED KRAFT

SIZE	15" x 16" UNFOLDED, 2-PLY
ITEM#	NP-SC-DN
QTY	3,000/CTN



LUNCH NAPKINS, UNBLEACHED, KRAFT

SIZE	13" x 13" UNFOLDED, 2-PLY
ITEM#	NP-SC-LN
QTY	4,500/CTN



DISPENSER NAPKINS

TALL FOLD NAPKINS



	COLOR/PLY	UNFOLDED SIZE	QTY
BWK8302	WHITE, 1 PLY	7" x 13.5"	10,000
BWK8320	WHITE, 1 PLY	7" x 13.25"	10,000
D3056B	WHITE, 1 PLY	6" x 13.5"	10,000
GPC33201	WHITE, 1 PLY	7" x 13.5"	10,000
KCC98710	WHITE, 1 PLY	7" x 13.5"	10,000



LOW FOLD NAPKINS

	COLOR/PLY	UNFOLDED SIZE	QTY
BWK8316	WHITE, 1 PLY	7" x 12"	8,000
MORD712	WHITE, 1 PLY	7" x 13.25"	8,000
MORD912	WHITE, 1 PLY	9" x 12"	8,000



TORK NAPKINS

	COLOR/PLY	UNFOLDED SIZE	QTY
D786E	KRAFT, 1-PLY	12" x 13"	6,000
D780	WHITE	12" x 13"	6,000



CONCESSION RELATED PRODUCTS

see page 23



DISPLAY DISPENSERS & NAPKINS

Features message panels, ideal for in-store promotions or to generate ad revenue.

TORK XPRESSNAP® TABLETOP NAPKIN DISPENSER

SIZE: 5.88" x 6.2" x 5.88"

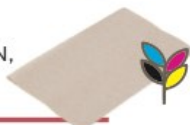
QTY: 1 ITEM #: 31XRT



TORK UNIVERSAL XPRESSNAP NAPKIN, INTER-FOLDED, KRAFT, 1-PLY

SIZE, UNFOLDED 8.5" x 8.5"

ITEM# QTY
DX906E 6,000/CTN



VALAY INTER-FOLDED NAPKIN DISPENSER

SIZE: 6.14" x 8" x 6.5"

QTY: 1 ITEM #: MORNT111EA



INTER-FOLDED NAPKIN, KRAFT, 2-PLY

SIZE, UNFOLDED 8.5" x 8.5"

ITEM# QTY
MOR5000VN 6,000/CTN



VENUE NAPKIN DISPENSER

SIZE: 6.5" x 6.12" x 6.9"

QTY: 4 ITEM #: SJMH4005TBK



INTER-FOLDED NAPKIN, WHITE, 1-PLY

SIZE, UNFOLDED 12" x 13"

ITEM# QTY
MORD1213 6,000/CTN



INTER-FOLDED NAPKIN, WHITE, 1-PLY

SIZE, UNFOLDED 12" x 17"

ITEM# QTY
MORD1217 6,000/CTN

DISPENSERS



	Tabletop Tall Fold Napkin Dispenser, Chrome	Tabletop Tall Fold Napkin Dispenser, Black	Tabletop Low Fold Napkin Dispenser Black
SIZE	3.75" x 4" x 7.5"	3.75" x 4" x 7.5"	3.75" x 4" x 7.5"
TAKES NAPKIN	BWK8302 BWK8320 D3056B	GPC33201 KCC98710	BWK8316 MORD712
CASE QTY ITEM #	12 SJMH900X	12 SJMH900BK	1 SJMH985BK



	Venue Full-fold Napkin Countertop Dispenser	Countertop Napkin Dispenser	Tork Napkin Table Dispenser	Tork Napkin Table Dispenser
SIZE	8" x 15.75" x 7.25"	7.63" x 11" x 5.5"	7.6" x 6.6" x 11.8"	7.5" x 5.6" x 6.3"
TAKES NAPKIN	MORD1213 MORD1217	MORD1213 MORD1217	D786E D780	D786E D780
CASE QTY ITEM #	6 SJMH5005TBK	1 SJMH3001BKC	1 17CBS	12 17TBS



Convey a solid branding message to your customers. Our team is ready to help you, from design to logistics to warehousing. See page 54 for additional details or contact us today.

SERVICE WARE
NAPKINS



Visit our website for additional products and current pricing goodstartpackaging.com

JUICE BOTTLES

We're offering these high quality, recyclable PET juice bottles because there is currently not a more environmentally friendly alternative available to us.

Please encourage your customers to recycle these bottles. Combined with the health benefits of the fresh juices and milks our clients sell in these bottles, we believe this is the most mutually beneficial solution for people and the environment.

Juice bottles features:

- Made of crystal clear, recyclable, FDA approved PET resin
- IMS Certified (for milk/dairy use)
- HPP compatible
- BPA free
- Caps are sold separately and available in White, Black, Red, Orange, Yellow or Green



16 oz Square Bottles, Watts Juicery, Jacksonville Beach, FL



Square Bottles, HighWater Fresh Bar, Paducah, KY

SQUARE AND WH BOTTLES

- Square neck
- Order by the case or by the pallet
- Caps sold separately



SQUARE		8 oz		12 oz		16 oz		32 oz	
SQUARE x HT		2.35" x 4.09"		2.35" x 5.55"		2.51" x 6.55"		2.87" x 9.96"	
CASE QTY	ITEM #	320	8SJB	160	12SJB	135	16SJB	—	N/A
PALLET QTY	ITEM #	7,040	8SJB-F	5,120	12SJB-F	3,982	16SJB-F	1,872	32SJB-F



WH SQUARE		10 oz		12 oz		16 oz		32 oz	
SQUARE x HT		1.97" x 6.1"		1.97" x 7.05"		2.33" x 7.04"		2.87" x 8.98"	
PALLET QTY	ITEM #	6,384	10WH-F	5,928	12WH-F	4,160	16WH-F	1,872	32WH-F



Drinking Straws...
like these Striped Paper Smoothie Straws, see page 11.



ROUND ENERGY DRINK BOTTLES

- Order by the case or pallet
- Caps sold separately



ROUND		2 oz		4 oz		10 oz		12 oz FATBOY		12 oz		16 oz	
DIAMETER x HEIGHT		1.08" x 3.65"		2.07" x 4.81"		2.07" x 6.62"		2.17" x 7.17"		2.07" x 7.82"		2.35" x 7.91"	
CASE QTY	ITEM #	1,100	2NRG	728	4NRG	—	N/A	—	N/A	232	12NRG	—	N/A
PALLET QTY	ITEM #	—	N/A	1,648	4NRG-F	5,568	10RJB-F	4,706	12FBNRG-F	3,712	12NRG-F	3,982	16NRG-F

TAMPER EVIDENT CAPS

Tamper evident ring seal reassures your customers the product has not been touched since it was bottled.

- Offer a tight seal
- Caps can be placed on the bottles by hand, no equipment needed
- 38mm (1.5") diameter
- Order by quantities of 135, 160 or by the case (2,500 pcs)



TAMPER EVIDENT CAPS		BLACK	GREEN	WHITE	ORANGE	RED	YELLOW
135 CAPS	ITEM #	135BLACKCAP	135GREENCAP	135WHITECAP	N/A	N/A	N/A
160 CAPS	ITEM #	160BLACKCAP	160GREENCAP	160WHITECAP	N/A	N/A	N/A
2,500 CAPS (CASE)	ITEM #	CAPSCASEBLACK	CAPSCASEGREEN	CAPSCASEWHITE	CAPSCASEORANGE	CAPSCASERED	CAPSCASEYELLOW

JUICE
BOTTLES



KRAFT BOTTLE CARRIERS

Perfect for all our 8 to 16 oz juice bottles! These carriers are made from a wet-strength, moisture-resistant board, which means that the carrier can be kept in a refrigerated area and it will not disintegrate.

4 Bottle Carrier

- 5" w x 5" d x 7.25" h (including handle)
- Front panel is 4.875" h
- Cell size is 2.5" x 2.5"

6 Bottle Carrier

- 7.63" w x 5.25" d x 8" h (including handle)
- Front panel is 4.875" h
- Cell size is 2.5" x 2.5"

CARRIER	4 PACK	6 PACK
W x D x H	5" x 5" x 7.25"	7.63" x 5.25" x 8"
CASE QTY	200	135
ITEM #	CBC-4KRAFT	CBC-6KRAFT



Custom printing available; contact us for pricing.



Custom printing available, see page 54 for details.



TAKE-OUT BAGS

Reduce greenhouse gas emissions from landfills and the need to cut down trees with these kraft bags. These are an ideal sustainable bag choice for eco-conscious restaurants and retail stores. Range of sizes will accommodate many food/take-out items.

- Available in natural kraft or white
- 40% minimum post consumer recycled material
- 100% recyclable and compostable
- Contain no old growth fiber
- Meet bag ordinances of most major cities such as San Francisco

BAGS WITH TWISTED PAPER HANDLES

- Extremely versatile for takeout, carryout or shopping
- Strong, twisted paper handles

BAGS WITH FLAT HANDLES

- Self-standing style allows for easier loading and efficiency
- Handles are glued and reinforced to the inside of the bag

BAGS WITH CUT-OUT HANDLES

- Flat bottom makes these perfect for carrying food that needs to sit flat
- Unique size is a great option for your carry-out needs



SMALL		W x H x GUSSET	HANDLE	ITEM #	CASE QTY	BEST FOR
A	#4	8" x 10.5" x 4.75"	TWISTED PAPER	S04NK	250	6 oz – 16 oz Fiber Bowls 8 oz – 32 oz Paper Bowls
B	#16	10" x 10" x 5"	TWISTED PAPER	S16NK	250	8 oz – 16 oz Rectangular Deli Containers 8 oz – 32 oz Round Deli Containers
C	#12	10" x 13" x 5"	TWISTED PAPER	S12NK	250	24 oz Burrito Bowls 6 x 6 x 3 Fiber Clamshells

MEDIUM		W x H x GUSSET	HANDLE	ITEM #	CASE QTY	BEST FOR
D	#66	10" x 12.75" x 7"	TWISTED PAPER	S17NK	250	32 oz Burrito Bowls Fiber Food Trays
E	DURO	11" x 11" x 6"	DIE CUT	18077	250	Compost-A-Paks PLA Salad Bowls PLA Clamshells
F	#10	12" x 12" x 7"	FLAT	S10NK	250	Fiber Hoagie Boxes
G	#11	13" x 13" x 7"	TWISTED PAPER	S11NK	250	
G	#11	13" x 13" x 7"	TWISTED PAPER-WHITE	S11VK	250	

LARGE		W x H x GUSSET	HANDLE	ITEM #	CASE QTY	BEST FOR
H	#9	14.5" x 16.25" x 9"	TWISTED PAPER	S09NK	250	Flatbread Pizza Boxes Fiber Clamshells
I	#5	12" x 15.75" x 7"	FLAT	S05NK	250	24 oz and 32 oz Fiber Bowls
J	#2	16" x 12" x 6"	TWISTED PAPER	S02NK	250	
K	#1	16" x 19" x 6"	TWISTED PAPER	S01NK	250	

BAGS
PAPER TAKEOUT



CUSTOM PRINTING

We are proud to work with Tulsack as our stock and custom printed handle bag supplier. They share our values in outstanding customer service as well as sustainability. Tulsack's environmentally friendly processes involve consuming minimal raw materials, using water-based inks for printing, minimizing outputs into the environment, and a "do no harm" pledge to the communities in which they operate.

Their waste paper is even collected and sold into the recovered fiber market.

Tulsack's bags are always excellent quality and arrive in a timely manner.

Colored handles, additional sizes, and various printing options available; please inquire.

TULSACK
A Division of ProAmpac

Contact us today and we'll help you choose the best eco-friendly bags for your business goodstartpackaging.com

PAPER FOOD BAGS

Who doesn't love food in a paper bag? These versatile biodegradable food bags are great for small treats.

- Made of recycled, unbleached kraft paper
- 100% compostable
- FDA approved food safe

KRAFT COFFEE BAGS

- Kraft paper, PLA lined
- Ideal for coffee, baked goods, gourmet treats, even dog treats, and farm stand goodies
- For about the same price, a see-through window made of compostable plastic will display its contents to customers

W/O WINDOW	SIZE W x GUSSET x HT	ITEM #	CASE QTY
A 1/2 lb.	3.375" x 2.5" x 7.75"	CN-6PLA	1,000
B 1 lb.	4.25" x 2.5" x 10.5"	CN-1PLA	1,000
C 5 lb.	6" x 4" x 18"	CN-5TPLA	500
WITH WINDOW			
D 1 lb.	4.75" x 2.5" x 9.75"	TN-4PLA	1,000



PASTRY / BAKED GOODS BAGS

#2S SANDWICH / PASTRY BAG

- An eco-friendly option for serving sandwiches and bakery items
- Convenient package for eating on-the-go
- Grease resistant paper provides stain protection
- Economical choice for single-serve hot food applications

	ITEM #	CS QTY
6.5" x 1" x 8"	300100	2,000



Additional eco-Friendly products for baked goods...

see page 44



CELLOPHANE GOODIE BAGS- GUSSETED OR NON GUSSETED

Visit our website for biodegradable cellophane bags made from plant cellulose that is naturally 100% compostable. We offer bags with gussets or without in many sizes for packaging nuts, candies, spices, and produce. These bags also work well for greasy and oily foods. Made from a heavy duty film called Natureflex, these bags feel like traditional plastic, yet are actually made from biomass content of eucalyptus trees, making them marine degradable as well as certified compostable.



BAGS FOR GROCERS

Compostable produce and t-shirt bags are loved by customers at farmers markets, co-ops, and natural food stores. Made in the United States by BioBag®, these biodegradable bags are made from a bioplastic that is entirely derived from plant materials, which allows the produce stored inside them to breathe. This is a positive feature because it prolongs the life of the produce by allowing the ethylene gas and excess moisture to escape, keeping fruits and veggies as fresh as possible.



PRODUCE: BIOBAGS

- Strong enough to line the compost bin
- BioBags can also go right into the compost heap along with kitchen scraps

11" x 17" BAG	ITEM #	CS QTY
CASE	PB1117	3,200
1/4 CASE	PB1117-R	800



T-SHIRT BAGS

- Strong enough to carry groceries
- BioBags can also go right into the compost heap along with kitchen scraps
- 7-gallon bag holds approximately 10 lbs
- 10-gallon bag holds approximately 20 lbs

		ITEM #	CS QTY
7 GAL.	16.1" x 19.7" x 0.80 mil	07GSHOP	500
10 GAL.	17.7" x 22.8" x 0.96 mil	10GSHOP	500



NEED KRAFT PAPER GROCERY BAGS?

Please visit our website or call us and we'll help you select the right bags.



Annually, more than 20 million tons of plastic is placed in U.S. landfills.

Don't be fooled by the green color

Plastic bags that are fully compostable are certified by BPI.

BioBag is the manufacturer of our biodegradable plastic bags. These compostable bags meet plastic bag ban requirements and do not require behavioral change in society. Of course the most eco-friendly grocery bags are reusable cloth bags, but not everyone is able to, or wants to, carry those around with them. (Paper grocery bags are another option.)



BAGS
GROCERIES

BAKERY SUPPLIES

COMPOSTABLE BAKERY BOXES

Our line of eco-friendly bakery boxes maintain a classic style, while effectively respecting our environment. These boxes are the industry's standard, economic choice, using 20% less fiber than other box materials. All boxes in this line are recyclable and compostable where industrial facilities exist. Boxes offered are lock corner, one-piece tuck tops without windows. Others styles available, please visit our website.



LOCK CORNER TUCK TOP, NON WINDOW BOXES

KRAFT	ITEM #	CS QTY
10" x 10" x 4"	SCH0973K	100
14" x 10" x 4"	SCH1025K	100



WHITE	ITEM #	CS QTY
6" x 6" x 2.5"	SCH0901	250
8" x 8" x 2.5"	SCH0933	250
9" x 9" x 2.5"	SCH0953	250
10" x 10" x 2.5"	SCH0969	250
6" x 6" x 3"	SCH0905	250
7" x 7" x 3"	SCH0917	250
5.5" x 5.5" x 4"	SCH0902	250
6" x 6" x 4"	SCH0909	250
7" x 7" x 4"	SCH0921	250
9" x 9" x 4"	SCH0961	200
10" x 10" x 4"	SCH0973	250
12" x 12" x 5"	SCH0987	100
16" x 16" x 5"	SCH0995	250
14" x 14" x 6"	SCH0993	250



DONUT BOXES

WHITE	ITEM #	CS QTY
10" x 6" x 3.5"	SCH1017	250



SHEET CAKE TRAYS

- Lock corner, 1 piece tray
- Corrugated
- Bright white
- Grease proof

WHITE	ITEM #	CS QTY
25.87" x 18.06" x 4"	SCH1190	25



BARN BOXES
FOR YOUR BAKED TREATS

see page 31



did you
know...

Landfills contribute to climate change by creating methane, a potent greenhouse gas. Once a landfill is "filled," it can no longer be used for its intended purpose since it takes hundreds of years for trash to fully decompose. We're running out of space for landfills so disposing of trash is becoming more and more expensive.



START PACKAGING™ Client Service 866-226-0584 M-F, 9a-5p ET | info@goodstartpackaging.com



ROUND CATERING TRAYS

These corrugated trays are a cost-effective green alternative to plastic and foil; they're made from 100% post-consumer recycled content.

- Superior 3-ply corrugated strength
- Dual oven-able at 400° F for up to 1 hour
- Natural kraft color
- Domestically manufactured and sourced from Sustainable Forestry Initiative mills
- Recyclable in paper stream
- 3.5" tall round catering lids are not oven or microwave safe

BAKING SHEET TRAYS AND LIDS

Kraft baking sheet trays offer a unique and cost-effective alternative to traditional foil, metal, CPET and erected corrugated trays. They are a great, new functional packaging option for all your food service bakery applications.

- Natural kraft color
- Made with recycled, renewable resources
- Superior strength and rigidity in freezer to oven (and microwave) applications
- Trays only are dual oven-able (microwave and conventional oven) up to 400° F for up to 1 hour (can be hotter or longer depending on the application)
- Clear companion lids are not oven or microwave safe
- Excellent product release
- Trays improve metal detection efficiency
- Quick-touch handling immediately after baking

QUARTER SHEET	L x W x H	ITEM #	CASE QTY
TRAY	12.75" x 8.88" x 1.25"	42072	200
COMPANION LID	12.75" x 8.88" x 2.25"	37925	100

HALF SHEET	L x W x H	ITEM #	CASE QTY
TRAY	18" x 13" x 1.25"	42075	100
COMPANION LID	18" x 13" x 2.25"	37950	100

12"	ITEM #	CASE QTY
TRAY	63045	50
LID	03016	25

16"	ITEM #	CASE QTY
TRAY	63045	50
LID	04016	25

18"	ITEM #	CASE QTY
TRAY	63045	50
LID	05016	25



Tested, proven, and certified as recyclable and repulpable under the recyclability standards and test protocols defined by the Fibre Box Association and the Corrugated Packaging Alliance (CPA).



PLA clamshells
for your baked goods
see page 22

SUPPLIES
BAKERY

FIBER SINGLE COMPARTMENT TRAYS

Ideal for packaging meat cutlets, fish, pastries and baked goods.

- Compostable
- Ask us about food wrap film

15" x 6.5" x 0.3"

ITEM #	TR-SC-UL6
CASE QTY	400



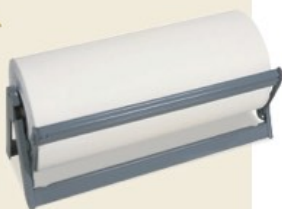
Contact us today and we'll help you choose the best containers for your baked goods goodstartpackaging.com

BUTCHER PAPER

WHITE, ROLL	ITEM #	CS QTY
15" x 900'	BWKB1540900	1 ROLL
18" x 1,000'	BWKB18401000	1 ROLL
24" x 1,000'	BWKB24401000	1 ROLL
30" x 900'	BWKB3040900	1 ROLL
36" x 1,100'	BWKB36401100	1 ROLL
36" x 900'	BWKB3640900	1 ROLL
48" x 900'	BWKB4840900	1 ROLL
40# KRAFT, ROLL	ITEM #	CS QTY
30" x 1,275'	60099	1 ROLL
WHITE, SHEETS	ITEM #	CS QTY
9.5" x 5" x 5"	SCH2707	125
8.87" x 5" x 6.75"	SCH2709	150

PAPER ROLL CUTTER

- Double-edge, spring-loaded blade
- Includes rubber feet to protect surfaces
- Can be mounted on counter, under counter or on a wall (mounting hardware not included)
- Holds up to 9" diameter roll, on 3" core
- Powder coated gray finish



9" DIA. ROLLS	ITEM #	CS QTY
18" wide	BUPA50018	1
30" wide	BUPA50030	1



Butcher paper rolls—great for daily menus!

CONE BASKET LINERS

- Multi-purpose product can also be used as a sandwich bag for takeout applications
- Breathable high-performance paper keeps your fried food crispy and fresh

NATURAL	ITEM #	CS QTY
7" x 6.75"	300107	2,000



GREASE RESISTANT PAPER LINERS

PAPER SHEETS

- Treated paper resists grease penetration and staining
- Sheets can be used as wraps or basket liners
- Breathable paper keeps wrapped breads fresher by allowing steam and moisture to escape
- Packed in a dispenser box made from 100% recycled fiber

NATURAL	ITEM #	CS QTY
12" x 12"	300897	5,000
14" x 14"	300899	4,000
15" x 16"	300898	3,000



KRAFT GOODIE BAGS



- Kraft paper, PLA lined
- See-through window made of compostable plastic displays contents to customers

1 lb.

SIZE	4.75" x 2.5" x 9.75"
ITEM #	TN-4PLA
CASE QTY	1,000

Additional bag products...

please see page 40

WRAP PAPER / TISSUE

INTER-FOLDED BAKERY TISSUE

- Natural, soy-blend wax tissue.
- Economical choice for low moisture pick-up applications
- Easy-to-grab sheets in a convenient, pop-up box dispenser
- Provide a safe barrier for handling bakery products



NATURAL 6" x 10.75"

ITEM #	010001
CASE QTY	10,000

SANDWICH / PASTRY WRAPS

INSULATED SANDWICH WRAPS

- Compostable
- Triangle shaped design creates insulating air pockets keeping food hot and fresh longer than standard one and two ply paper wraps
- Excellent moisture and grease resistance
- Superior heat retention keeps food hot longer than standard wraps
- Innovative functionality keeps different varieties of bread moist or crisp depending on which side of the wrap contacts the food



	ITEM #	CS QTY
15" x 16"	300849	1,000



I-RAP SANDWICH WRAPS

- Patented design of I-Rap® paper allows steam and moisture to escape to keep foods fresh while providing insulation for added heat retention
- Provide grease resistance and heat retention without a wax, foil or poly barrier
- Compostable and is made from EcoCraft® paper for added sustainability



	ITEM #	CS QTY
12" x 12"	300393	2,000

BAGS

#2S SANDWICH BAG

- Compostable
- Convenient package for eating on-the-go
- Grease resistant paper provide stain protection
- Economical choice for single-serve hot food applications



	ITEM #	CS QTY
6.5" x 8" x 1"	300100	2,000

TRAY LINERS



ARTISAN PAN LINERS

- Bake and reuse
- Made from unbleached grease-proof paper with a chromium-free, multi-bake release
- Maximize your cost reduction and sustainability



	ITEM #	CS QTY
16.75" x 24.37"	030010	1,000

TRAY LINERS

- Grease resistant.
- Unbleached, un-dyed natural kraft paper

	ITEM #	CS QTY
9" x 12"	960-NAT	3,000



Custom printing available, see page 54 for details.



Custom-printed Tray Insert, The Street, Honolulu, HI

FIBER CATERING TRAYS

Make your event a green one with these 100% compostable catering trays. Made from wheatstraw fiber, these disposable catering trays are both durable and eco-friendly.

Catering Tray Features:

- Made from gluten-free wheatstraw
- Specially designed strengthening ribs in pan and lid provide increased stability
- Lined with PLA for enhanced leak resistance (adjustable tray not lined)
- FDA food safe approved
- Can be used for both hot and cold items
- Can handle food up to 220° F
- Microwave and freezer safe



HALF SHEET TRAYS

1 COMPARTMENT, 120 oz	L x W x H	ITEM #	CASE QTY
PLA LINED	12.75" x 10.37" x 2.76"	CA-SC-120L	200
WITH DIVIDERS, UNLINED	12.75" x 10.37" x 2.76"	CA-SC-120V	200

2 COMPARTMENT, 112 oz	L x W x H	ITEM #	CASE QTY
PLA LINED	12.75" x 10.37" x 2.76"	CA-SC-112DL	200

3 COMPARTMENT, 104 oz	L x W x H	ITEM #	CASE QTY
PLA LINED	12.75" x 10.37" x 2.76"	CA-SC-104TL	200

HALF SHEET TRAY LIDS

FLAT LID	L x W x H	ITEM #	CASE QTY
FLAT LID	12.75" x 10.37" x 0.5"	CAL-SC-104	200
RAISED LID	12.75" x 10.37" x 1.25"	CAL-SC-104R	200

FULL SHEET TRAYS

1 COMPARTMENT, 280 oz	L x W x H	ITEM #	CASE QTY
UNLINED	18.7" x 11.25" x 3"	CA-SC-280	100



Half sheet trays fit in full sheet tray



Divider inserts in half sheet tray



Half sheet trays shown with regular and raised lid

FIBER SQUARE PLATES

Strong, sturdy, and beautiful, these fiber plates make an excellent alternative to traditional disposable paper plates.

Features:

- No plastic or wax lining, yet soak proof
- Grease and cut resistant
- Conform to FDA guidelines for food use
- See page 34 for details

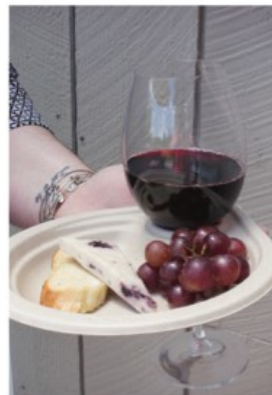


FIBER PARTY PLATES

The ideal solution for social and business events—carry both your drink and food in one hand!

Features:

- Shown, 7" plate, which is perfect for wine glasses and appetizers
- 9" plate holds larger beverage cups
- See page 34 for details



Additional Fiber Plates...

please see page 33

NEW FIBER OVAL BOWL

Serve side sauces, dips, and more. You'll find the unique profile a clean and fresh canvas for any type of food.

- Sturdy and strong
- Microwave and freezer safe
- Suitable for hot foods up to 220° F
- Soak proof
- Lid not available
- See page 13 for details



NEW SHALLOW FIBER BOWL

Fully compostable, this bowl is a perfect alternative to foam or hard plastic and is perfect for pasta, soups, salads, or veggie noodles!

- 36 ounce fiber bowl
- Grease resistant
- Microwave and freezer safe.
- Suitable for foods up to 220° F
- Lid not available
- See page 13 for details



SUPPLIES
CATERING

Additional Fiber Bowls...

please see page 12

please visit our website for additional catering-related products



did you know...

As of 2018, 104 cities in 9 states and the District of Columbia have banned single use disposable polystyrene (commonly called Styrofoam) due to its negative impacts on the environment. Many more are considering bans and an increasing number of cities now offer curbside compost pick up of food scraps and used compostable food service ware like ours.

FACILITY SUPPLIES

For your convenience, we offer an assortment of products as a one-stop resource for all of your supplies.

COFFEE FILTERS

These high quality, heavy-weight paper coffee filters allow the water to flow properly through coffee grounds. It's uniquely designed for strength with taller walls to help reduce overflow of grounds when brewing coffee. The paper stock used in the manufacturing of these coffee filters is produced using an elemental chlorine-free (ECF) bleaching method.



DESCRIPTION	ITEM #	CASE QTY
1.5 GALLON, BUNN	BUNREGULAR3M	3,000
3 GALLON, URN, BUNN	BUNU318X7252CS	250
6 GALLON, URN, BUNN	BUN6GAL21X9	250
10 GALLON, URN, BUNN	BUN10GAL23X9	250
12 CUP, BUNN	BUN1M5002	1,000
8-10 CUP, BUNN	BUNBCF100BCT	1,200
1.5 GALLON/32 CUP BUNN BREWER	BUNGOURMET504	500
1.5 GALLON, BUNN Fits iced tea brewers and most Bunn commercial coffee brewers	BUNTEASYS2	500
8-10 CUP Fits most Bunn coffee and iced tea brewers, and 1.5 gallon urns	BUNA101M500S	1,000

MELITTA® CONE STYLE COFFEE FILTER

Made from unbleached paper pulp for today's demand for environmentally safe, natural products, Melitta makes annual contributions to the American Forests Global Releaf fund.

- Fits all 8 to 12 cup electric cone-drip coffeemakers
- Doubled crimped seal guaranteed not to burst
- Compostable

ITEM #	CS QTY
MLA624602	1,200

COMPANION PRODUCTS... Look for these self-serve products online and in our catalog



Cups



Lids / Stirrers / Sleeves



Trays



did you know...

Good Start Packaging is one of the only stocking distributors in the United States that is dedicated to sustainable products. And we make our wholesale prices available on our website to anyone. Because of our purchase volume and environmental mission, the manufacturers enable us to offer our clients pricing that is 7-20% below the price they would pay if they bought factory direct. Great prices and stellar service!



START PACKAGING™ Client Service 866-226-0584 M-F, 9a-5p ET | info@goodstartpackaging.com

PERFORATED TOWEL ROLL



These towels are super absorbent, strong, yet soft, and hold together even on tough jobs—we like to use these in our own office.

- Unbleached 100% recycled paper (minimum 85% post-consumer content)
- EcoLogo and Green Seal Certified
- 210 sheet count per roll
- High bulk, 2-ply construction
- 157.5 ft per roll; 1,890 ft. per case
- Rolls fit on a standard paper towel holder
- Roll width: 11"; Roll diameter 5.5"; Sheet length: 9"

	ITEM #	CS QTY
TOWEL ROLL	HK1975A	12 rolls

Just because it's green... doesn't mean it's "green"

Plastic bags that are fully compostable are certified by the Biodegradable Plastics Institute (BPI).

Many companies now offer so called biodegradable trash bags that are actually not compostable. A recent university research evaluated the various additives added to the plastic to supposedly make so-called biodegradable garbage bags compostable. The findings revealed that the additives are ineffective.



did you know...

*In one week, we go through 10 billion plastic bags worldwide and **only 1%** are recycled.*



COMPOSTABLE GARBAGE BAGS

The natural material of these compostable bags allows heat and moisture to escape or evaporate. This means that food waste stored in these bags will stay fresher longer on its way to the compost facility. This reduces bad smells in your facility, caused by bacteria building up in traditional plastic bags that do not "breathe."

- Made from a blend of PLA and synthetic polymers
- Compost in 3-6 months, leaving no residue
- Certified compostable by BPI

SIZE	L x W x THICKNESS (MIL)	ITEM #	CASE QTY
3 Gallon	17.7" x 16.9" x 0.6	BG-CS-3	500
13 Gallon	29" x 23" x 0.6	BG-CS-13	200
33 Gallon	39" x 33" x 1.0	BG-CS-33	100
39 Gallon	43" x 35" x 1.0	BG-CS-39	100
45 Gallon	46" x 40" x 1.0	BG-CS-45	100
55 Gallon	58" x 36" x 1.0	BG-CS-55	100

SUPPLIES
FACILITY

please visit our website for these products (and more...)

CLEANING SUPPLIES



FOOD HANDLING



PAPER TOWELS / TISSUES



Be sure to visit our website for back of the house, self-serve station supplies and more

goodstartpackaging.com

SUMMARY OF POLICIES

Return Policy: All items, sale items excluded, may be returned to us within 30 days from receipt of your order, if the item is unused and in the original manufacturer's packaging. Open merchandise is not accepted unless the items were shipped in error or damaged in shipping. Please contact our Client Service team for a RMA, return label and instructions. You will be responsible for round trip shipping plus a 10% restocking fee. Upon receipt and inspection of the returned items, we will credit you, less these fees, to the original form of payment. Refunds may take up to two weeks to process. All sale items are final and are not eligible for return.

Canceling/Modifying an Order: Please contact us as immediately to modify or cancel your order. We cannot guarantee a cancellation once orders are en route to our warehouse. Please note our business hours: Monday to Friday, 9 am–5 pm ET. If you place an order over the weekend and need to make a change, please send us an email or call us first thing Monday morning.

Payments: We accept the following forms of payment:
Credit cards: All major credit cards
PayPal: Orders will ship once PayPal eCheck clears.
Bank wire: Please contact us for information. Orders will not ship until payment is confirmed.
Customer agrees that transactions processed with Good Start Packaging represent an offer to buy merchandise. Good Start Packaging reserves the right to refuse any order and refund any credit card payments for any reason. Reasons may include, but are not limited to, inventory availability, concern about credit card fraud, and excess shipping charges not already in transaction.

Terms: Please contact us to apply.

Sales Tax: Good Start Packaging charges sales tax for merchandise shipped to destinations in California based on the applicable state sales tax rate and the location to which the order is being shipped. California customers who are tax exempt, please contact us to submit your resale certificate.

Bulk Ordering: Contact us regarding volume discounts and product shipping.

Shipping: In-stock item orders are processed within 24 hours during hours of operation. We process and ship orders Monday through Friday; our office and warehouses are closed on the weekend and major holidays. Occasionally, an item may have to ship directly from our supplier. If this is the case, we will inform you of the shipping time frame. Drop-shipped orders generally ship within five business days. Most of our items ship via FedEx Ground. Larger pallet orders ship via FedEx Freight. Please let us know if a liftgate is needed at the time of your order; additional fees may apply.

Shipping to a residential address: We ship via FedEx Home Delivery, which delivers Monday through Saturday.

Orders Outside U.S.: We ship to the countries listed below via FedEx Crossborders. Customers are responsible for all duties, taxes and fees associated with international shipments.

Australia	Germany	Netherlands
Austria	Guam	New Zealand
Bahamas	Hong Kong	Puerto Rico
Bermuda	Ireland	Singapore
Canada	Italy	South Africa
Dominican Republic	Jamaica	Spain
France	Japan	Sweden
	Mexico	United Kingdom

Canada Orders: Customers will be billed duties, taxes and other fees. If you would like to use your own broker, please forward us the information at the time of order. We try to ship orders to Canada in one shipment and may hold partial orders in our warehouse until all items are ready to ship. If this causes any delay, we will notify you via email.

Expedited Shipping: Please call us for availability and expedited shipping options before 11 am ET, Monday through Friday.

Damaged Items / Errors in Shipment: If your shipment arrives damaged, you must contact our Client Service team within five business days of receiving your goods in order to receive any compensation for damages. We may request photos of the damaged items to show our supplier or shipping carrier.

Changes or Errors in Shipping Address: If you need to change, correct or update your shipping address, you must contact our Client Service team immediately. You will be responsible for any change fees to update an address once the order ships.

Any unsuccessful delivery and refused shipment caused by an incorrect address will be treated as a standard return, subject to shipping and restocking fees.

Please visit our website for complete terms and conditions.

Two warehouses to serve you better

We ship same day for in-stock item orders received by 11 am, Monday through Friday.

Local delivery is also available.



Need an item right away?

Please call us for expedited shipping options before 11 am ET, Monday through Friday.



can't find what you're looking for? WE HAVE MORE PRODUCTS ON OUR WEBSITE

ORDERING IS EASY

Online 24/7 at goodstartpackaging.com

Or call 866-226-0584, Monday–Friday, 9a to 5p ET, to speak with one of our experts.

OUR CLIENT SERVICE TEAM: EXPERTS AT YOUR SERVICE

We're all about great client service. We have a caring team of experts available to help clients with product questions, order placement and account management. If you need help, pick up the phone and call us.

We're here for you!

I LOVE WHAT THIS COMPANY SELLS

“I love that this company sells compostable clamshell containers for sandwiches, produce, and other goods. They also contact you immediately if there is a question or a problem with your order. Delivery time is quick, communication is great, product is great!”

–B. Dinkins

EXCELLENT COMPANY

“I must admit I rarely take the time to fill out reviews because of my busy schedule... but, these guys deserve my time. Customer service is awesome, the products are awesome, and their prices are very competitive. Our company is looking forward to showing off our gourmet food to go in Good Start Packaging's products!”

– M. Kelley

JUICE BOTTLES

“Great; just received my juice bottles in Nairobi this morning and they look awesome. Thank you.”

– L. Kanar

I LOVE GOOD START PACKAGING

“Great product and customer service is number 1. Hard to find wholesaler like this, highly recommended!”

– J. M. Zhao

THIS GUY ROCKS!

“I recently placed an order and they exceeded expectations with delivery, service and customer service. I had to contact them over the weekend and to my surprise I interacted with their CEO but did not realize this until the end of our conversation when I praised him and told him to ask his supervisor for a raise. Humble and down to earth, running his company the way every CEO should. Keep up the great work!”

– F. Villegas

THE BEST BUSINESS: 10 STAR!

“The best business! Friendly and prompt in all they do! Definitely a 5 star... but I think they're a 10!”

– R. Ugurlu

GREAT CUSTOMER SERVICE, FAST SHIPPING & REASONABLE PRICING!

“We are a small restaurant but do a lot of to-go orders. A couple of months ago we tried out Good Start when our other provider had manufacturing issues. Not only were they incredibly helpful in sending samples, but they are also extremely fast at shipping. Their pricing is also 20% lower than what we were paying previously. Last but not least, ordering online through their website is a breeze... highly recommend Good Start Packaging!”

– E.

GOOD START HELPS OUR COMPANY

“Good Start helps our company be the company we want to be. With their compostable packaging we feel comfortable with our imprint on the environment.”

– M. Harrison

WE'RE SO HAPPY WE FOUND THIS COMPANY

“We are so happy we found this company. We thought we could get away with napkins for the wedding cocktail hour but ended up needing actual plates. We didn't want to rent additional plates due to cost so we purchased the sample of the 7" and 9" disposable plates with built-in beverage holder. Score! We tried them out and ended up ordering the package of 7". My fiancée is an environmentalist, which helps me be one as well, and I was so stoked to share with her what the plates are made of. Win and win! Super thank you to Good Start Packaging! It's these things that people find memorable at a wedding, not to mention helpful with the wine glass holder. So thanks for being part of that.”

– C. Carr

WE WORK WITH A LOCAL GARDEN

“We work with a local garden (The Pfeiffer Center) to compost the wooden forks, spoons and knives after we use them for our events! We are excited that a compostable product exists for our event purposes!”

– A. Lohss

Shop with confidence... Order samples

Most items in this catalog are available for you to try them out before you buy.
For details, visit goodstartpackaging.com/samples



Visit our website for additional eco-friendly products and pricing or to request a sample goodstartpackaging.com



Branded products make a difference

Putting your brand on your take-out packaging isn't just about looking polished, it's one of the most cost-effective marketing investments you can make. When your customers are out and about enjoying your food, your brand should be all over it.

What better way to create a positive association with your business than with environmentally friendly, branded cups, bags, deli wraps or take-out containers?

Luckily you don't have to spend tons of money to get free brand exposure. In fact, on a per unit basis, packaging that is custom printed with your logo is often the same or lower cost than non-custom printed versions.





CUSTOM PRINTING

Why choose Good Start Packaging?

We only work with the best manufacturers. Low prices are great but who cares about saving a few pennies if quality is poor, delivery is unreliable, or products are not the most sustainable on the market?

We make it easy... Do you need us to store your printed products and ship it on-demand as you need it? Need help with developing your artwork? Worried that your branded products won't make it in time for a store opening?

- We're experts at project managing custom-printed packaging projects. We'll work with the factory art departments and manage the logistics schedule so you don't have to worry. If you have a tight schedule to meet a grand opening, we'll work to expedite orders to meet your needs.
- Our account managers are trained in all the steps to make sure you avoid any issues in obtaining the best quality print job delivered on time.
- Our strong factory relationships often allow us to offer you custom-printed products at the same or lower costs than non-custom printed versions!
- No room? No problem! We can store your products in one of our warehouses and ship custom printed product to you as you need it. Ask us for more information.
- We can connect you with graphic design services if you need assistance creating or modifying artwork to accommodate a specific take-out container.

Is branded packaging right for you?

Most clients can justify the upfront investment of having their brand on our products if they use at least 1,000 products per week per item (e.g. 1,000 16 oz hot cups). At that level, pricing for custom-branded products is typically the same as their non-custom printed versions due to volume discounts.

To get started, give us a call today at 866-226-0584.

PRODUCTS FOR CUSTOM PRINTING	NO. OF COLORS	MIN. ORDER	LEAD TIME
COLD CUPS 3 to 24 oz cups	1 to 6 colors	50 cases for most sizes (1,000 cups per case)	10-12 weeks
HOT CUPS 4 to 20 oz cups Natural Kraft, White, Glossy White	1 to 8 colors	50 cases for most sizes (1,000 cups per case)	10-12 weeks
JAVA JACKETS/SLEEVES 8 oz sleeve 12 to 20 oz sleeve	1 to 6 colors	40 cases (1,300 sleeves per case)	6 weeks
PAPER BOWLS 8 to 32 oz bowls	1 to 8 colors eco-friendly ink on FSC certified paper	50 to 100 cases (500-1,000 bowls per case)	10-12 weeks
CLEAR ROUND DELI CONTAINERS 8 to 32 oz containers	1 to 6 colors	100 cases (500-1,000 containers per case)	10-12 weeks
NAPKINS Multiple sizes and folds White and Kraft	1 to 3 colors, eco-friendly water-based inks	Contact us	10-12 weeks
CLAM SHELLS Multiple sizes	CMYK colors	2 pallet minimum order (pallets can be mixed with 2 different container sizes)	3-4 weeks
HANDLED PAPER BAGS Multiple sizes Kraft and White	1 to 3 colors	5,000 bags; tiered pricing available up to 25,000 bags	6 weeks

Contact us today at 866-226-0584 and we'll help with your branded packaging goodstartpackaging.com



Take Action: Be Heard

Write emails to your local government officials to ask when compost service can be offered to businesses and residents in your city.



Fla Juice & Bowl, Jacksonville Beach, FL



Good Start Packaging's Chris Scott at Habitat for Humanity



Choices Cafe, Coconut Grove, FL



did you know...

Products bearing the FSC (Forest Stewardship Council) logo are certified to meet stringent standards to ensure paper is sourced from forest to shelf in a sustainable manner. FSC consults with its members who include Greenpeace, World Wildlife Fund and landowners, to ensure that forest standards represent everyone's needs; from Indigenous Peoples to endangered animal species.

Your customers care about the Earth

Help them feel good about the choices they're making by being a responsible steward of the environment in everything you do.



Good Burrito, Elizabethtown, PA



Union Coffee Company, Milford, NH



HighWater Fresh Bar, Paducah, KY



Big Kahuna's Cafe, Merrimack, NH



did you know...

BPI (Biodegradable Products Institute) is a nonprofit organization that tests products to ensure they meet scientific specifications (ASTM D6400 or D6868) for compostability, based on more than eight years of research by suppliers, composters and academia.



Good Start Packaging's Heather Connolly at NH Food Bank Garden



START PACKAGING™ Client Service 866-226-0584 M-F, 9a-5p ET

info@goodstartpackaging.com

We love your reviews!

We appreciate your reviews.
We send requests for reviews of our products and service after each order.
Please take a few moments to provide a review and of course let us know if there's anything we can do to make your experience better.



Sirena Gelato, Bellingham, WA



Juice Jar, Erie, PA



Gentle Brew, Long Beach, NY



Mother Juice, Cambridge, MA

We love food!

Don't get us wrong:
The sustainable products we sell are super exciting, but we'd rather talk to you about your menu and helping you find the most sustainable and reliable packaging for your food.



Watts Juicery, Jacksonville, FL

Some of our Amazing clients

Juice Bars Food Trucks
Cafés Universities
Restaurants Delivery Services



Café Buunni, New York, NY



Delicious Raw, Davie, FL



The Juice Laundry, Charlottesville, VA



My Avocado, Orange, PA



BurritOh!, Charlottesville, VA



Starfish Cafe, Ocean City, NJ

LEARN MORE...


Check out our internet media page www.GoodStart.tv to see inspiring, informational videos about our clients, our products and reducing waste.



For current pricing and additional products, visit goodstartpackaging.com

GOOD START PACKAGING
258 S RIVER RD, SUITE 2
BEDFORD, NH 03110

PRESORTED
STANDARD
U.S. POSTAGE
PAID
RAM COMPANIES



your customers do care about
the earth—help them feel
good about the choices they're
making by being a responsible
steward of the environment in
everything you do.

Catalog design/layout and product photography: H+A Productions (516) 679-2686

REDUCE. RECYCLE. REUSE. 

Printed with soy-based ink on Rolland Enviro100, a 100% post-consumer waste recycled paper.



GOOD START PACKAGING™ Client Service 866-226-0584 M-F, 9a-5p ET | info@goodstartpackaging.com